

Portion 0 of the Farm 702 "VLAKFONTEIN" KS

1606.3687 ha - Limpopo Province



AUCTION DATE : SATURDAY 13 JULY @ 13H00 CASTLE DE WILDT - MODIMOLLE

Rinette Louw | 082 825 8472 | rinette@landhouse.co.za

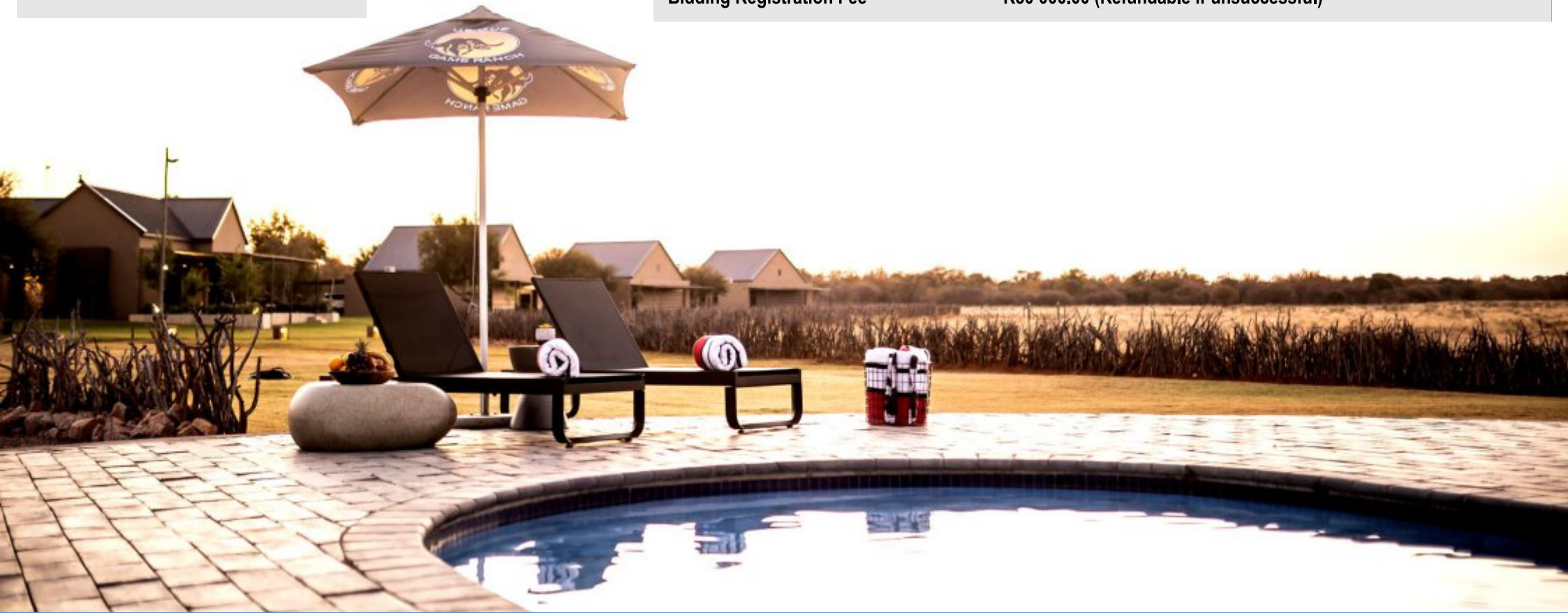
www.landhouse.co.za

Contents

1. Disclaimer
2. Locality
3. Title Deed Information
4. Description & Improvements
5. Photography
6. Aerial Photography

Terms and Conditions of Auction

Deposit	5% payable on the day of the auction
Commission	3% (plus VAT) payable on the day of the auction over and above bid price
Guarantees	45 (Forty-five) days from date of acceptance
Confirmation	7 (Seven) days (Owner can confirm on the day of the auction)
VAT / Transfer Duty	VAT applicable
Bidding Registration Fee	R50 000.00 (Refundable if unsuccessful)



Disclaimer

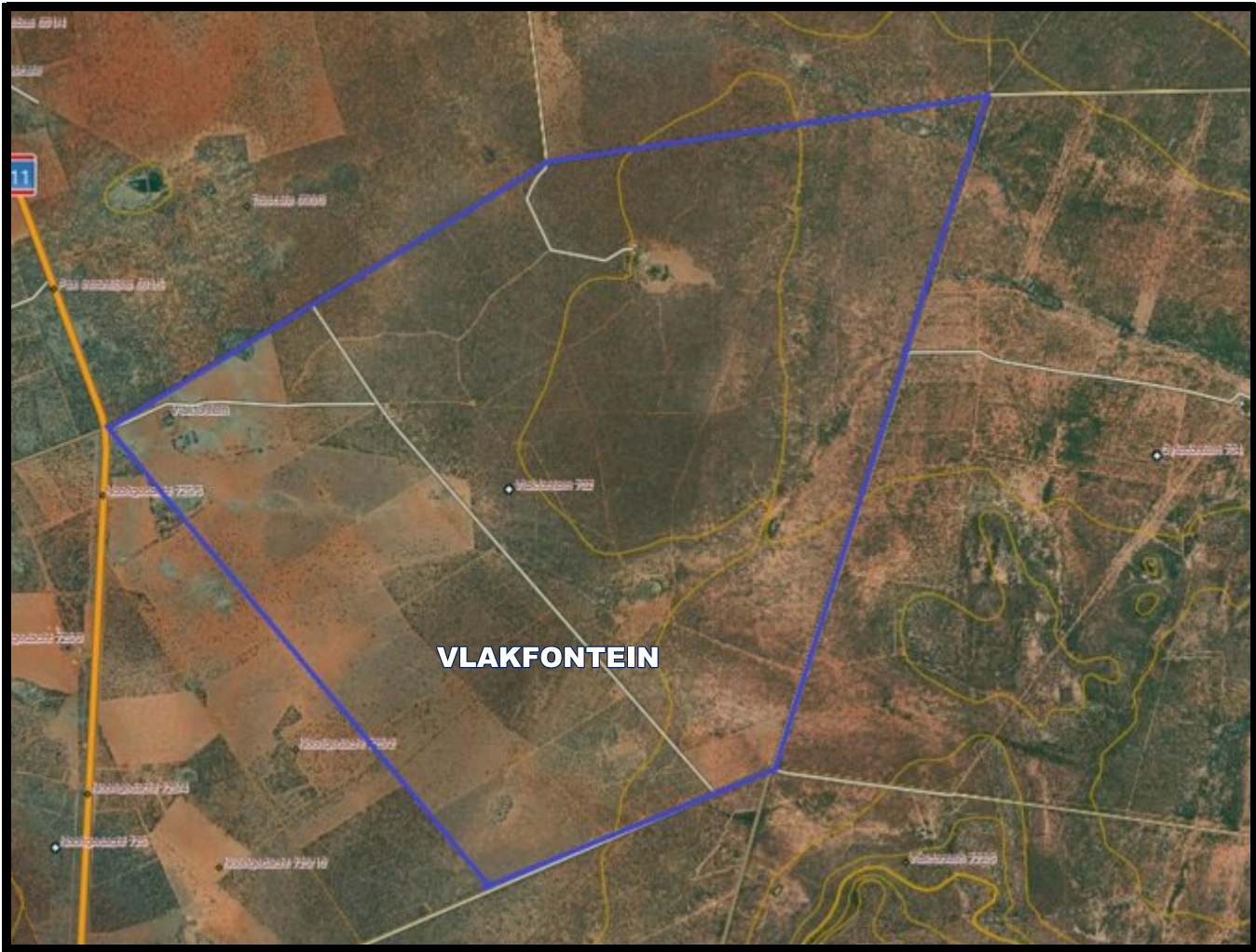
Whilst all reasonable care has been taken to obtain the correct information, neither Landhouse Agricultural nor the Sellers, guarantee the correctness of the information, and none of the aforementioned will be held liable for any direct or indirect damages or loss, of whatsoever nature, suffered by any person as a result of errors or omissions in the information supplied, whether due to the negligence or otherwise of Landhouse Agricultural, the Sellers or any other person. The proposed Consumer Protection Regulations, 2010 as well as the Rules of Auction can be viewed at www.landhouse.co.za. Bidders must register to bid and provide original proof of identity and residence on registration. The Rules of Auction contain the registration requirements if you intend to bid on behalf of another person or an entity. The above lots are all subject to a reserve price and the sale by auction is subject to a right to bid by or on behalf of the owner or auctioneer.

General

Property Address: Portion 0 of the Farm 702 "VLAKFONTEIN" KS

-24.835983,29.202391

Suburb & City: Limpopo Province



LOCALITY



PROPERTY OUTLINE

TITLE DEED INFORMATION

Registered Owner : **PRETORIA MEDICAL AID CONSULTANTS CC**

Registered description: **Portion 0 of the Farm 702 "VLAKFONTEIN" KS**

Title Deed Number: **T82691/1996**

Site area: **1606.3687 HA**



DESCRIPTIONS & IMPROVEMENTS

Ubique Game Ranch, nestled in Limpopo Province, is a sprawling 1600-hectare haven for African wildlife. Situated just 200 kilometers north of Pretoria and a mere 2.5-hour drive from OR Tambo International Airport, it's a prime destination for conservation, breeding, hunting, and ecotourism in the heart of the Bushveld.

Accommodation offers:

Fully catered four-star lodges with a total of 8 rooms. These rooms comprise 2 honeymoon suites, 2 family suites, and 4 double guest suites, Offering a main area, kitchen, lounge and bar area. (Brick / stone and thatch structure with built-in fireplace and solid wood bar)

Honeymoon Suites:

- 1 King-size Bed
- En-Suite bathroom with a shower and bathtub

Family Suites:

- 1 Queen-size Bed
- 2 Single Beds
- En-Suite bathroom with a shower and bathtub

Double Guest Suites:

- 2 Double-size Beds
- En-Suite bathroom with a shower and bathtub



DESCRIPTION & IMPROVEMENTS

Dining area:

Allows guests to enjoy the bushveld views with their meals or sit and dine under the stars at the swimming pool.

Facilities include:

- Bar
- Wi-Fi
- Swimming Pool
- Boma (outdoor gathering area) under the stars
- Exciting game drives featuring exotic animals
- Sundowner experiences
- Lapa with a built in braai



ADDITIONAL IMPROVEMENTS

4 Boreholes (3 Equipped).

3 Camps:

- 100 ha Camp (entrance to Ubique - first camp).
- 500 ha Camp (can be used for Buffalo or Hunting).
- 1000 ha Camp.

Luxury Main Residence:

3 Spacious bedrooms all with en-suite bathrooms, open-plan kitchen, living room and dining rooms extending onto the covered veranda. The main residence offers exceptional finishes and security.



Ubique Eco-Tourism Lodge:

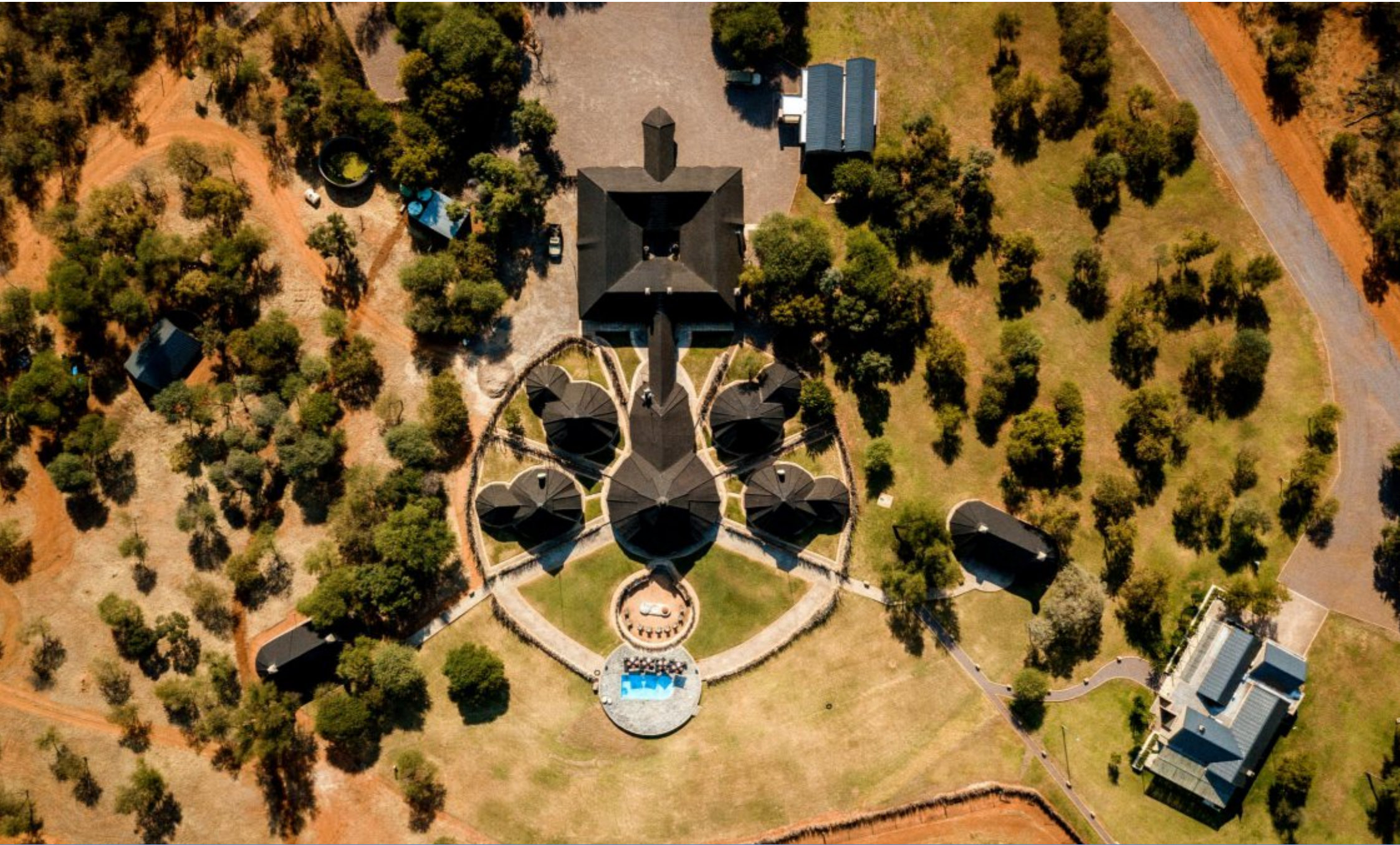
The 3 immaculate Eco-Tourism units each offers 2 air conditioned bedrooms with en-suite bathrooms, kitchen, lounge with fireplace. These units are ideal international clients.







AERIAL PHOTOGRAPHY



AERIAL PHOTOGRAPHY

SPECIES	APPROXIMATELY GAME COUNT
Blesbok Common	25
Buffalo	13 Cows + 1 Bull
Impala Common	250
Kudu	25
Ostrich	12
Sable	14 Cows + 1 Bull
Waterbuck	25
Wildebeest	50
Zebra	25
Total Animals:	441







landhouse

properties

LANDHOUSE AGRICULTURAL PTY LTD – 2018/389037/07

178 Pofadder Street ▪ Roodeplaat ▪ 0039

Phone: 012 364 2563 ▪ Mobile: 082 610 1199 ▪ Email: info@landhouse.co.za