

**24**  
HOUR

# ONLINE AUCTION

Portion 4I of the Farm 348 "NABOOMSPRUIT" KR

21.4133 Ha - Mookgophong, Limpopo



**AUCTION DATE:**

STARTS THURSDAY 5 MARCH 2026 @ 11H00 - ENDS FRIDAY 6 MARCH 2026 @ 11H00 - ONLINE

 Rinette Louw | 082 825 8472 | rinette@landhouse.co.za



[www.landhouse.co.za](http://www.landhouse.co.za)

## CONTENTS:

1. Disclaimer
2. Locality
3. Title Deed Information
4. Description & Improvements
5. Photography

## TERMS AND CONDITIONS OF AUCTION:

<b>Deposit</b>	<b>5% payable on the day of the auction.</b>
<b>Commission</b>	<b>6% (plus VAT) payable on the day of the auction over and above bid price.</b>
<b>Guarantees</b>	<b>45 (Forty-five) days from date of acceptance.</b>
<b>Confirmation</b>	<b>7 (Seven) days (Owner can confirm on the day of the auction.</b>
<b>VAT / Transfer Duty</b>	<b>VAT applicable</b>
<b>Bidding Registration Fee</b>	<b>R10 000.00 (Refundable if unsuccessful)</b>

### AUCTION DISCLAIMER:

Whilst all reasonable care has been taken to ensure the accuracy of the information provided, Landhouse Agricultural does not guarantee its correctness and will not be held liable for any direct or indirect damages or losses, of whatsoever nature, suffered by any person as a result of errors or omissions in the information supplied, whether due to the negligence of Landhouse Agricultural, the Sellers, or any other party. The proposed Consumer Protection Regulations, 2010, as well as the Rules of Auction, can be viewed at [www.landhouse.co.za](http://www.landhouse.co.za). Bidders must register to bid and must provide original proof of identity and residence upon registration. The Rules of Auction outline the registration requirements if you intend to bid on behalf of another person or an entity. All lots listed above are subject to a reserve price, and the sale by auction is subject to a right to bid by or on behalf of the owner or auctioneer.

## GENERAL

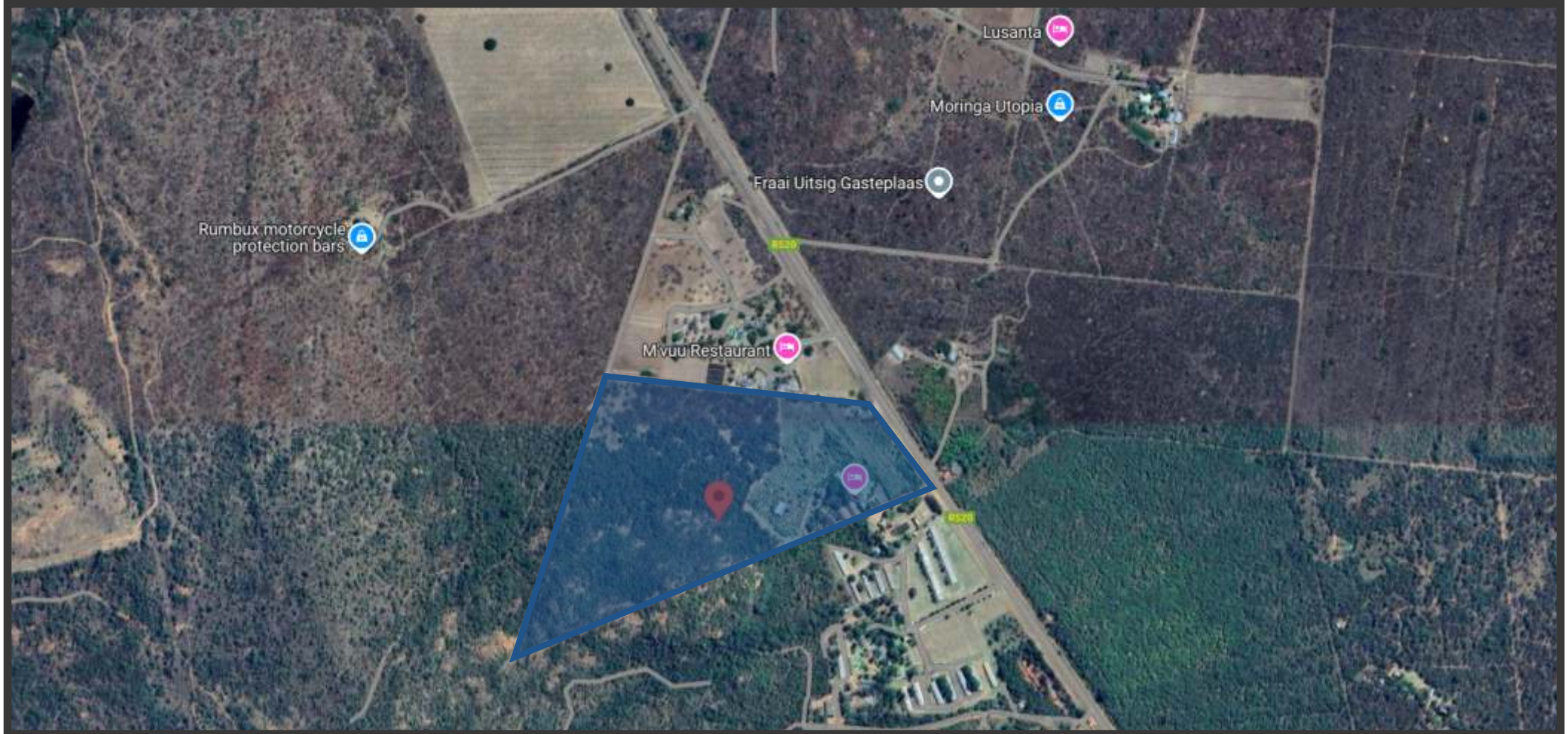
Property Address:

Portion 41 of the Farm 348 "NABOOMSPRUIT" KR

-24.486406, 28.685189

Suburb & City:

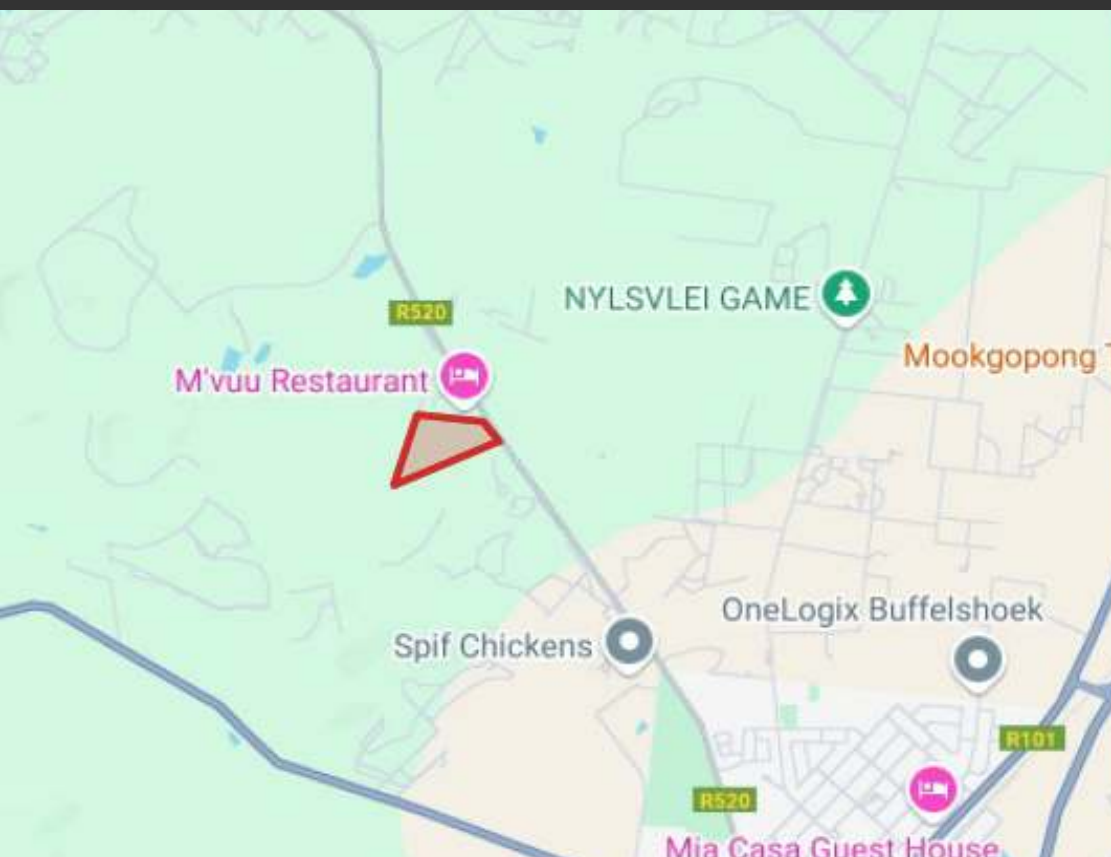
Mookgophong, Limpopo Province



## LOCALITY

## TITLE DEED DESCRIPTION

**Title Deed Number:** T9984/2023  
**Registered Owner:** KAPP CATHARINA MARIA  
**Registered description:** Portion 4I of the Farm 348 "NABOOMSPRUIT" KR  
**Site Area:** 21.4133 Ha  
**Vat / Transfer Duty:** VAT TBC



## TITLE DEED DESCRIPTION

## DESCRIPTION & IMPROVEMENTS:

### 1) FARM:

- 3 x Fenced Camps/Area's.(fully Game Fenced with Electric wire's as addition)
- 1<sup>st</sup> area(1.2Ha) :
  - Outbuildings, 4 x Guest House, 2x Lapa, Chapel, Parking area, Swimming Pool & Main House.
- The 2<sup>nd</sup> area(6.2Ha) :
  - Orchard with 1700 Mango Tree's(equipped with Irrigation System), 16m x 11m Vegetable Garden fully covered with 40% Shade Netting.
  - 1 x Equipped Bore-hole(15,000lit/hour delivering to 2 x 10,000lit), Tanks serving Houses and Mango Tree's.
  - Second Bore-hole indicated by C.P. Leone Bore-hole Surveys, Water at 200m to be Drilled & Equipped.
  - Chapel, 22m x 14m was Built in Orchard for Wedding Functions(can easily be closed as Storage Building)
- The 3<sup>rd</sup> Area(14Ha) :
  - Bushveld with 13 x Njala's and 8 x Impala.A small Koppie/Hill is situated in the back corner of the 4<sup>th</sup> Camp.
  - PC Wireless, a Communication Firm, has a Tower on the Koppie/Hill providing the owner free Internet Access and 1 x Free Telephone Line.
  - From time to time they will require access to the Tower to service and change Batteries.

### 2) VENUE'S - FOR WEDDINGS, FUNCTIONS, CONFERENCES, ETC.

- a) Lapa(200m<sup>2</sup>) with Wooden Bar equipped with a Wine Cooler & Double Door Bar Fridge.
- b) As part of Main House, below 4<sup>th</sup> Bedroom, Hall fitted with sliding Doors.Adjacent to Hall, 4 x Toilets with Wash basin.
- c) Swimming Pool with Lawn area next to Lapa. On the Lawn are 4 x Umbrellas & 18 x Garden Chairs.
- d) Chapel in front of Lapa with Table, 2 x Chairs and Pulpit. Original Church Bell next to Chapel.

- Lapa(40m<sup>2</sup>) in back Garden used for Kid's Parties, etc. Big Shade Trees, Jungle Gym, Slide & Swings on Lawn.
- Chapel(22m x 14m) in Orchard for bigger Weddings.
- Neat Garden and Lawn for Photo's, etc. Koi Dam with Kois in Garden.
- Various Tables and Chairs, Glasses and Cutlery for Functions.

### **3) MAIN HOUSE - HOUSE GEELHOUT:**

- 4 Bedroom House(Partly Furnished) with 4 x Bathroom, 3 x Ensuite, 3 x Bedroom on Floor Level & 4<sup>th</sup> Bedroom on second Floor with Balcony. 4<sup>th</sup> Bedroom with own Lounge and Workroom/Office.
- Lounge and Sleeper Bar within Dining area, equipped with 2 x Double Door Fridges.
- Playroom
- Kitchen with Dining area, equipped with Electric Stove with two Ovens & two Gas Stoves with Gas Ovens, Double Door Fridge in Kitchen. Cupboards and working area in Kitchen.
- Washing area equipped with two Dishwashers.
- Outside Storeroom for Cleaning Equipment.
- Kitchen and all Bedrooms fitted with Aircon's. All Rooms & Lounge with provided TV connecting points.
- Covered Patio(8m x 12m) situated at the Front Door.

### **4) HOUSE JAKARANDA:**

- Fully Furnished 3 x Bedroom House with 3 x Bathroom(all en-suite).
- Open plan Lounge and Diningroom with equipped Kitchen.
- All Bedrooms fitted with Aircon's. A second LAPA shared by Guests on back Lawn.

### **5) BROODBOOM:**

- Fully Furnished 1 x Bedroom Flat with Bathroom and small area fitted with Kitchen Equipment. Room fitted with Aircon and TV.

### **6) SILVER OAKS:**

- Fully Furnished 2 x Bedroom House with 2 x Bathroom(all en-suite), Lounge , Diningroom and Equipped Kitchen. All Bedrooms fitted with Aircon's. Lounge has a TV.

### **7) WITSTINKHOUT I:**

- Fully Furnished 2 x Bedroom Apartment. Bedroom with Fridge, 2 x Plate Stove, Microwave, Kettle & Cutlery. 1 x Room with 1 x Double bed. Separate Shower , Toilet & Basin serving both Rooms.

### **8) GARAGES:**

- 5 x Garage with Roll-up Doors, fitted with Racks and Ceiling.

### **9) BUILDING CONSISTING OF WORKSHOPS, LAUNDRY AND CARAVAN GARAGE:**

- 1x Open Workshop area, 1x Workshop fitted with Roll-up Doors and Storage Racks. Work Benches x2 fitted in open area of Workshop.
- Caravan Garage, currently used as Parking fitted with Racks for Storage of Decor, etc.
- Laundry room with Geyser and Wash Basins. Laundry Lines next to Laundry room.

### **10) BUILDING CONSISTING OF SERVANTS KITCHEN, BEDROOM AND STORAGE AREA.**

- Kitchen for Servants, fitted with Basin, 1 x Room with two Single Beds and Cupboard.
- Open Store area under Roof. (Game Feed, etc.)
- Adjacent to Building is a 9m x 7m Steelframe covered with Shade Netting and Equipped with 6 x Steel Tables for growing Seeds and Plants. Spraying System in place.

### **11) POWER AND WATER SUPPLY:**

- 3Phase Electricity is supplied from the Municipality. 1 x Connection to the Raw Water system from Municipality, which is only used for the Garden area around the Swimming Pool. A 45KVA Generator(to assist during Power Failures).

### **12) EQUIPMENT:**

- 3 Wheeler Scooter with Tip Bucket used for bringing Mango Crates from Orchard to sorting area.
- Small John Deere Tractor with attachments.

### **13) FURNITURE, LINEN, CUTLERY, ETC.**

- A complete Inventory List will be prepared for Buyers.

### **14) RENOVATIONS:**

- Owner busy Painting all Buildings outside Walls and Roofs.















PHOTOGRAPHY



# landhouse

## properties

LANDHOUSE AGRICULTURAL PTY LTD – 2018/389037/07

111 Ringduif Street • Roodeplaat • 0030  
Phone: 012 364 2563 • Email: [info@landhouse.co.za](mailto:info@landhouse.co.za)  
[www.landhouse.co.za](http://www.landhouse.co.za)

