

# **MOUNT HOPE PRIVATE GAME RESERVE** **RE of Portion 0 of the Farm 157 "KLIPFONTEIN" KR**

**632.6679 Ha - Vaalwater, Waterberg, Limpopo  
Province**

**ON AUCTION**

**27 MAY 2026**

**ON SITE & ON LINE  
12h00**

 **Martin van Zyl - 082 610 1199 - [martin@landhouse.co.za](mailto:martin@landhouse.co.za)**



# Contents

General

Locality

Title Deed Description

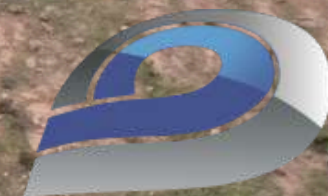
Description

Game

Photography



[www.landhuse.co.za](http://www.landhuse.co.za)



**landhouse**  
properties



# GENERAL

## Our Mission

- Our bespoke marketing is tailored for any client's needs, ensuring maximum exposure and a successful relationship with our clients.

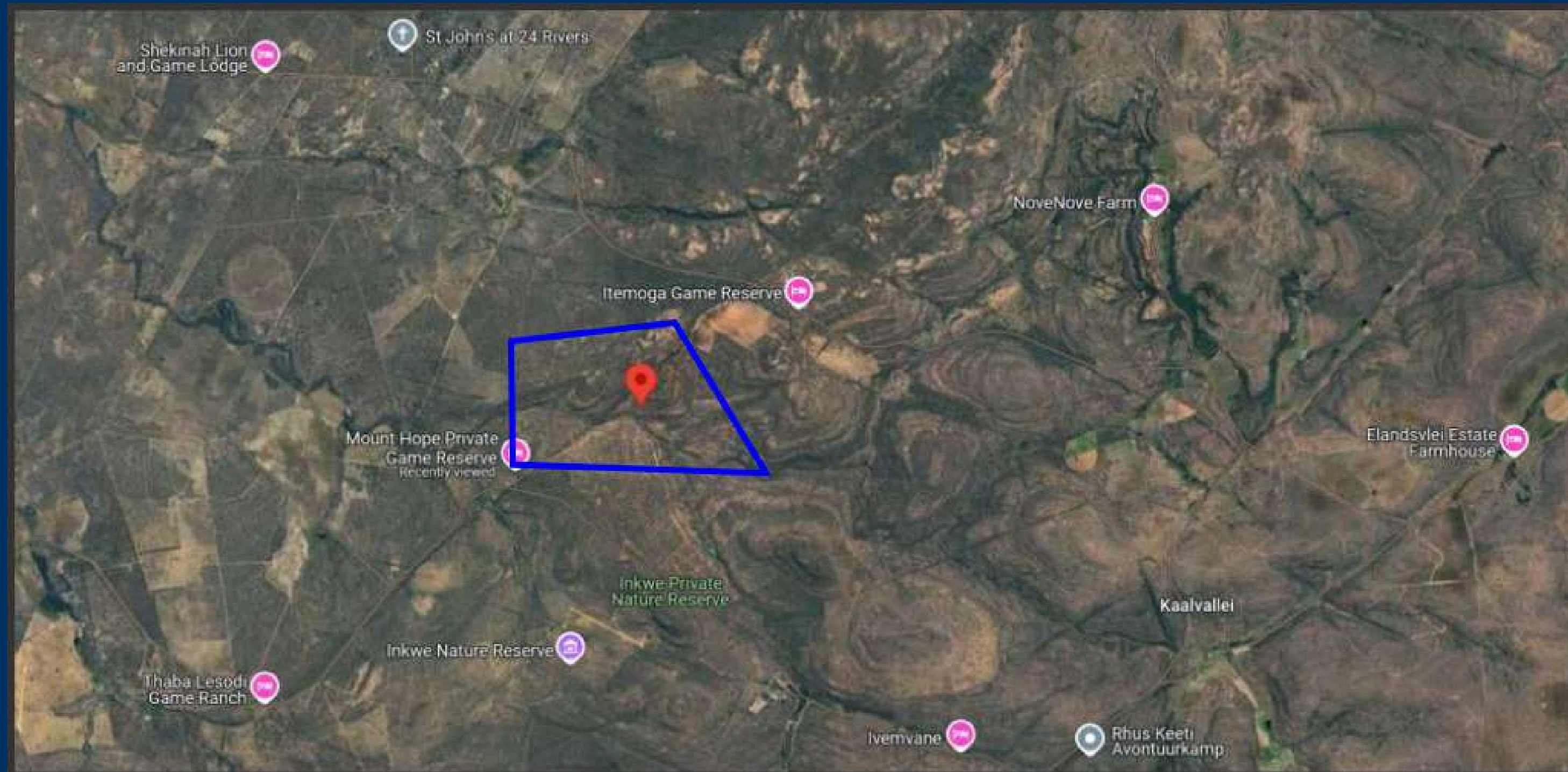
## Our Vision

- To be the leading auction and sales platform in the agricultural sector.

## Terms and Conditions

# LOCALITY

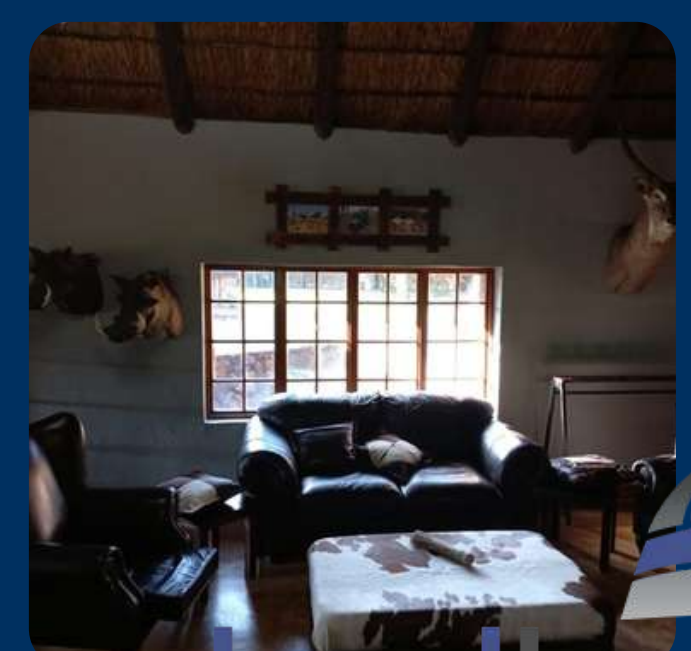
-24.307418, 28.304359



**MOUNT HOPE PRIVATE GAME RESERVE**  
**RE of Portion 0 of the Farm 157 "KLIPFONTEIN" KR**

# Title Deed Discription

Title Deed Number	T57693/2007PTA
Registered Land size	632.6679 Ha
Registered Discription	RE of Portion 0 of the Farm 157 "KLIPFONTEIN" KR
Registered Owner	MOUNT HOPE PRIVATE GAME RESERVE PTY LTD
Municipality	Mpumalanga



# Description



## LODGE AND ENTERTAINMENT AREA

- All rooms in the lodge area are fully furnish with on suite bathrooms  
The lodge have the following fully fitted rooms, sleeping 22 people

### Room 1 (sleeps 4)

- One bedroom with double bed and two quarter size beds;
- Large on suite bathroom with toilet, wash basin, bath and shower;

### Room 2 (sleeps 4)

- Two bedrooms, one room with double bed and one room with two quarter size beds;
- Large bathroom with toilet, wash basin, bath and shower.

### Room 3 (sleeps 2)

- One room with double bed;
- Bathroom with toilet, wash basin and bath, no shower.

### Room 4 (sleeps 2)

- One room with two quarter size beds;
- Bathroom with toilet, wash basin and shower, no bath.

### Room 5 (sleeps 4)

- Double storage room with one room at bottom and one room at the top;
- Bottom room have two quarter size beds in;
- Top room have two quarter size beds in but can sleep 4 beds if necessary;
- Bathroom on ground level with toilet, shower, wash basin and bath;
- Have one patio in front of room.

### Room 6 (sleeps 4)

- Double storage room with one room at bottom and one room at the top;
- Bottom room have two quarter size beds in;
- Top room have two quarter size beds in but can sleep 4 beds if necessary;
- Bathroom on ground level with toilet, shower, wash basin and bath;
- Have one patio in front of room; Fridge.

### Room 7 "PH Quarters" (sleeps 2)

- One room with two quarter size beds;
- Relative small room;
- Small bathroom with toilet, wash basin and shower.

# Description

## FULLY FITTED CONFERENCE ROOM/FACILITY

10 chair conference board room table excluding the sound system.

### FULLY FITTED OFFICE

1 x L Shape Desk plus large gun safe.  
Several Cabinets excluding yellow wood large cabinet  
2 x loose standing filing cabinets.  
1 x base station for two ways Radio System.  
8 x hand hold two-way radios.  
2 x fitted base station for two-way radios.  
1 x two-way radio tower.

### THE ENTERTAINMENT AREAS ARE INCLUSIVE OF THE FOLLOWING

#### **Lounge area:**

Several leather couches and tables, Gun holding rack;

#### **Bar Area with fully fitted bar inclusive of:**

Bar fridge  
Ice Machine  
Several glasses and bar accessories

#### **Dining area**

Several tables and chairs serving 28 people;  
3 x antique wall standing cabinets;  
2 x tables for food serving;  
2 x Anvil Bain marries Three Division;  
Trophies x 8.

#### **Lapa and fireplace area**

-1 x table and chair, 1 x lounge chair set, 2 x loose chairs, 8 x fireplace chairs, 2 x steel tables, 1 x gas braaiers linked to centralised gas bottle storing area  
-Several Braai accessories.

#### **Kitchen and food preparing area**

-Fully fitted kitchen with utensils and storing area;  
-Following equipment inclusive;  
2 x burner gas stoves with splash backs, 3 deck bread oven(3 phase),  
1 x large defy box freezer, 1 x fridge freezer combinations, 1 x Anvil Bain Marie Three Division;  
-Fully operational kitchen able to serve 50 people at any time;  
-Solid wood kitchen cupboards with marble tops;  
-Lockup pantry;  
-Fully fitted with centralised gas systems(gas ovens);  
-Large washing and cleaning and preparation areas.

#### **Two toilets for ladies and gents inside area.**

Koi dam fully inclusive of the following:

-Koi' fish to an estimate value of R100 000, 2 x koi pond pumps, 2 x UV filters, 2 x Bio filters, nearly 80 Koi in Koi pond.

Bore hole with system to support lodge;

Swimming Pool;

-Swimming Pool pump;

Additional Bore Hole on Farm for backup and water open farm.



# Description



## HOUSES FOR SELF-CATERING & ACCOMMODATION

### House Dwelling Number 1

- The house is built about 500 meters from the loge and is a fully fitted self-catering home
- The house includes the following features sleeping five people:
- Large Main bedroom with double bed and two single beds with on suite bathroom;

### NOT FURNISHED

- On suite bathroom has shower, bath, wash basin and large bath;
- Bedroom 2 with two x quarter sleeping beds sharing bathroom;
- Bedroom 3 with two x quarter sleeping beds sharing bathroom;
- Large guest bathroom with toilet, shower, wash basin and bath;
- Open lounge, dining and kitchen area;
- Kitchen fitted with solid wood cupboards;
- Large open stoep area;
- Double garage which can be converted into another double room if required.

### House Dwelling Number 2

- The house is built about 500 meters from the loge and is a not fitted with any furniture but cater for self-catering home.
- The house includes the following features sleeping five people and rooms can accommodate the same furniture as House dwelling one and includes:
- Large Main bedroom can fit the room with double bed and two single beds with on suite bathroom;

### NOT FURNISHED

- On suite bathroom has shower, bath, wash basin and large bath;
- Bedroom 2 can fit with two x quarter sleeping beds sharing bathroom;
- Bedroom 3 can fit with two x quarter sleeping beds sharing bathroom;
- Large guest bathroom with toilet, shower, wash basin and bath;
- Open lounge, dining and kitchen area;
- Kitchen fitted with solid wood cupboards;
- Large open stoep area;
- Double garage which can be converted into another double room if required.



# Description



## House Dwelling Number 3

- The house is built about 500 meters from the lodge and is ideal suited for a couple
- The house has the following features:
  - One bedroom;
  - Separate shower and toilet;
  - Separate bath room;
  - Fully fitted kitchen with built in cupboards;
  - Lounge/kitchen open plan area;
  - Small stoep area.

## House Dwelling Number 4

- The house is built about 700 meters from the lodge.
- The house has the following features:
  - Fully thatch roof;
  - Four bedrooms with, two bedrooms sharing one bathroom;
  - House can easily sleep 8 people;
  - Very luxury inside;
  - Big open plan kitchen, lounge and dining area;
  - Large veranda overlooking the Dwarsriver;
  - Beautiful garden;
  - House fully furnished;
  - Large outside braai area close to the river.

## Staff Quarters

The staff quarters as the following features:

- 8 x rooms 4 x 4 meters;
- 1 kitchen and wash area 4 x 4 meters;
- 3 smaller staff rooms;
- Total staff rooms are 11 sleeping 22 people if required;
- Separate ladies bathroom with toilet and two showers;
- Separate men's bathroom with toilet and two showers.

## Washroom and laundry

This is a fully fitted laundry inclusive of:

- 1 x Speed Queen Tumble dryer;
- 1 x Speed Queen Washing machine.
- Several Cabinets.
- Taxidermy and store room area
- Taxidermy preparation area;
- 6 x horse stables;
- 1 x horse stables preparation and store room;
- 6 x lockup 16m<sup>2</sup> storerooms;
- 2 x open side steel storerooms/sheds;
- Fully fitted 100 meter shooting range



# Description



## BUTCHERY AND CANOPY

### Canopy

The canopy can park five to six cars easily.  
This is a fully fitted butchery for the meat processing enthusiast

### Butchery includes the following:

- 1 x Large meat freezer room with ability to cool to 5%;
- 1 x Large(3.2 x 4 x 2.4) meat freezer room with ability to cool meat to -15% ;
- 1 x Fire Extinguisher Holing to wash down meat;
- 1 x 3 ton Chain Block with lift;
- 1 x 5 Ton Chain Block with lift;
- 4 x Butchery Handsaw American;
- 8 x Butchery knives;
- 2 x Meat band saw machines (380Volt);
- 1 x Heavy Duty Auto Sausage Filler;
- 2 x Industrial Vacuum Packer machines;
- 1 x Biro Tenderizer Model Pro;
- 1 x Biltong Slicer 0.75kw Crown;
- 1 x 30 kg portion scale;
- 1 x 300kg carcass scale;
- 1 x No 52 Atlas Mincer;
- 1 x Patty Machine Crown 100mm;
- 1 x Stainless steel processing tables;
- 1 x Biltong Room.

## VEHICLES, QUAD BIKES, EQUIPMENT AND FARMING EQUIPMENT

### Vehicles

The vehicles are maintained in a very good condition and all vehicles are fully operations. The following vehicles are included:

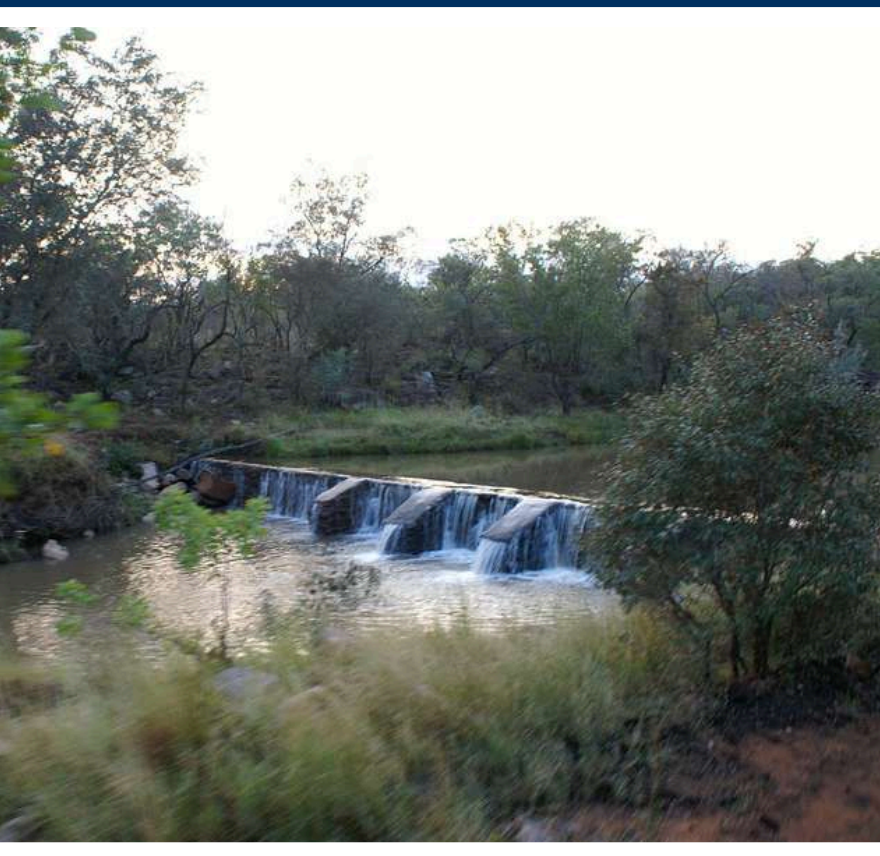
- 1 x Landrover GameViewer, close top;
- 1 x Grey Isuzu hunting Bakkie;
- 1 x ToyotaV8 (Lexus engine) rebuild Hunting Bakkie;
- 1 x Cream Landrover HuntingVehicle fully fitted for hunting;
- 1 x Toyota Cruiser withV8 Chevy engine fully fitted for hunting.
- 1 x Cream 4x4 Cruiser GameViewer

### Quad Bikes(ALL QUAD BIKES NEED SOME WORK)

The following quad bikes are included:

- 2 x Suzuki 250 LTZ Quad Bikes;
- 2 xYamaha BlasterYFS 200;

# Description



## Tractor and Trailers and farming equipment

The tractors are maintained in a very good condition and all tractors are fully operations. The following tractors are included:

- 1 x Ford Tractor 4 x 4;
- 1 x Large heavy Duty Farm Trailer;
- 1 x small trailer;
- 1 x Yellow 4 wheel scraper;
- 1 x 3 point scraper;
- 8 x Oom Gielie Dipbakke;
- 1 x Lister Engine and pump for pumping water from river into irrigation dams;
- 1 x Diesel generator;
- Several garden equipment and lawnmowers;
- 4 x pressure pumps
- 1 x TRF70 1.5 HP 220V Hammer mill

## RARE GAME BREEDING CAMPS AND HUNTING FARM

The farm is uniquely developed with 5 rare game breeding camps and 450 hectare open hunting farm

The rare breeding camps are of a very high quality with 2.3 meter high line fencing, 1.5meter high varkdraad and 8 stains of electric fencing. Camps details are as follow:

### Camp 1

- 20 hectare fully fenced camp
- 2 x watering holes & 2 x thatch covered feeding points;
- 2 x Oom Gielie feeding troughs;
- 2 x entrance gates.

### Camp 2

- 25 hectare fully fenced camp
- 2 x watering holes & 1 x thatch covered feeding points;
- 2 x Oom Gielie feeding troughs;
- 5 x entrance gates.

### Camp 3

- 25 hectare fully fenced camp
- 2 x watering holes & 1 x thatch covered feeding points;
- 2 x Oom Gielie feeding troughs;
- 3 x entrance gates

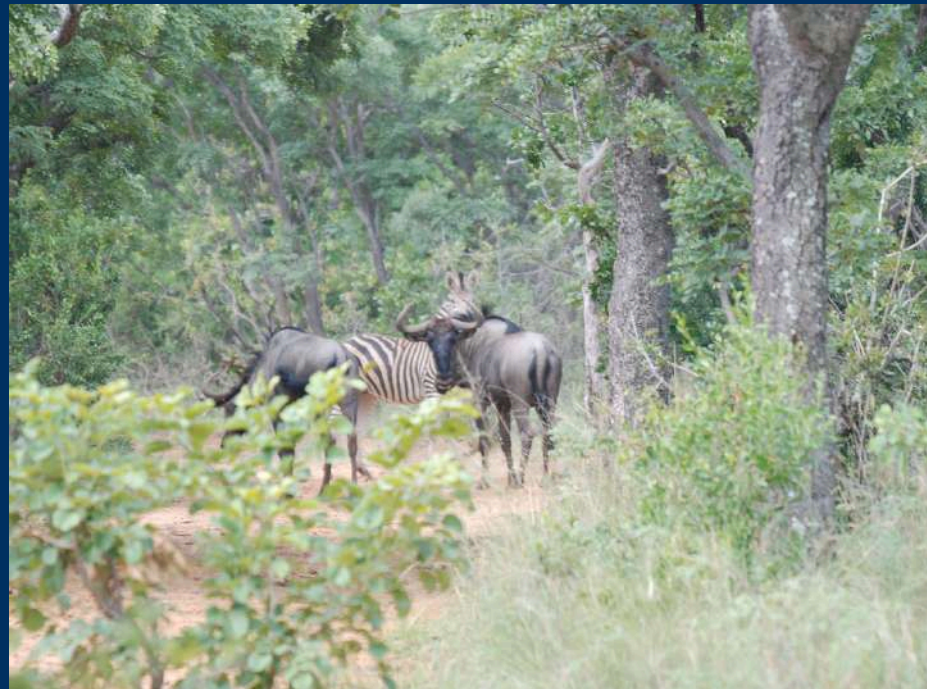
### Camp 4

- 20 hectare fully fenced camp
- 2 x watering holes & 2 x thatch covered feeding points;
- 2 x Oom Gielie feeding troughs;
- 4 x entrance gates

### Camp 5

- 65 hectare fully fenced camp
- 2 x watering holes & 2 x thatch covered feeding points;
- 2 x Oom Gielie feeding troughs;
- 3 x entrance gates

# Game



landhouse  
properties

# Game

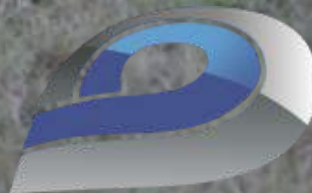
## SUMMARY OF GAME ON FARM AS OFF 28 FEBRUARY 2026

Game Quantities as at 28 February 2026

Description	Quantity
Golden wildebeest Bulls	9
Golden wildebeest Females	20
Blue Wildebeest	60
Eland	20
Njala	20
Impala	120
Zebra	10
Kudu	30
Giraffe	10
Waterbuck	10
Duiker	20
Bushbuck	10
Bushpig	10
Warthog	30
Klipspringer	8
<b>TOTAL OPEN FARM</b>	<b>387</b>

## GAME IN CAMPS

Description	Quantity
Black Impala	6
Black Impala Breeding Ram	1
Black Impala Ewes	12
White Flank Impala	20
Fellow Deer	4
Impala White Flanks Splits	11
Sringbuck	6
Steenbuck	2
<b>TOTAL GAME IN CAMPS</b>	<b>62</b>
<b>TOTAL GAME ON FARM</b>	<b>449</b>



# Photography



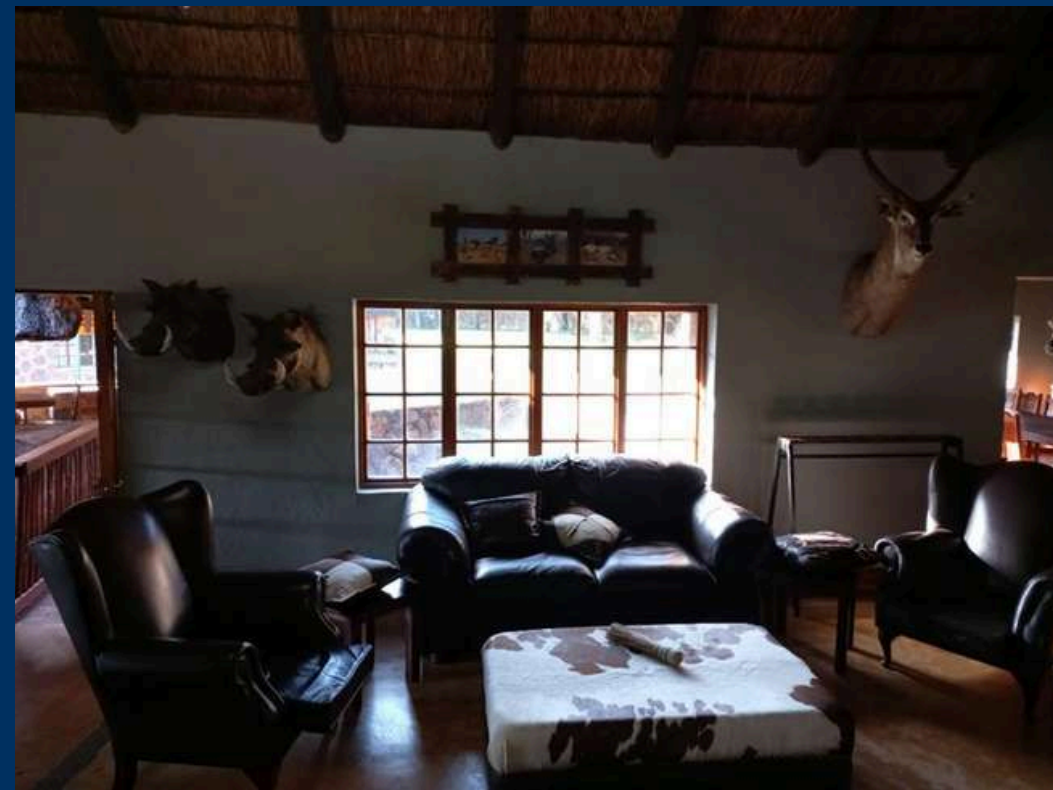
# Photography



# Photography



# Photography



[www.landhuse.co.za](http://www.landhuse.co.za)



landhouse  
properties

# Photography



# *Thank You!*

## Contact Us



012 364 2563



info@landhouse.co.za



www.landhouse.co.za



111 Ringduif Street, Roodeplaat, 0030



landhouse  
properties