

MOUNT HOPE PRIVATE GAME RESERVE **RE of Portion 0 of the Farm 157 "KLIPFONTEIN" KR**

**632.6679 Ha - Vaalwater, Waterberg, Limpopo
Province**

On Auction

14 May 2026
11h00

On Site & Online

 **Martin van Zyl - 082 610 1199 - martin@landhouse.co.za**


landhouse
properties





Contents

General

Locality

Title Deed Description

Description

Game

Photography



www.landhuse.co.za

GENERAL

Our Mission

- Our bespoke marketing is tailored for any client's needs, ensuring maximum exposure and a successful relationship with our clients.

Our Vision

- To be the leading auction and sales platform in the agricultural sector.

Terms and Conditions

- **Deposit** - 5% Payable on the day of the auction.
- **Commission** - 6% (plus VAT) payable on the day of the auction over and above bid price.
- **Guarantees** - 45 (Fourty Five) days from date of acceptance.
- **Confirmation** - 7 (seven) days (Owner can confirm on the day of the auction)
- **VAT / Transfer Duty** - VAT
- **Bidding Registration Fee** - R10 000.00 (Refundable if unsuccessful)

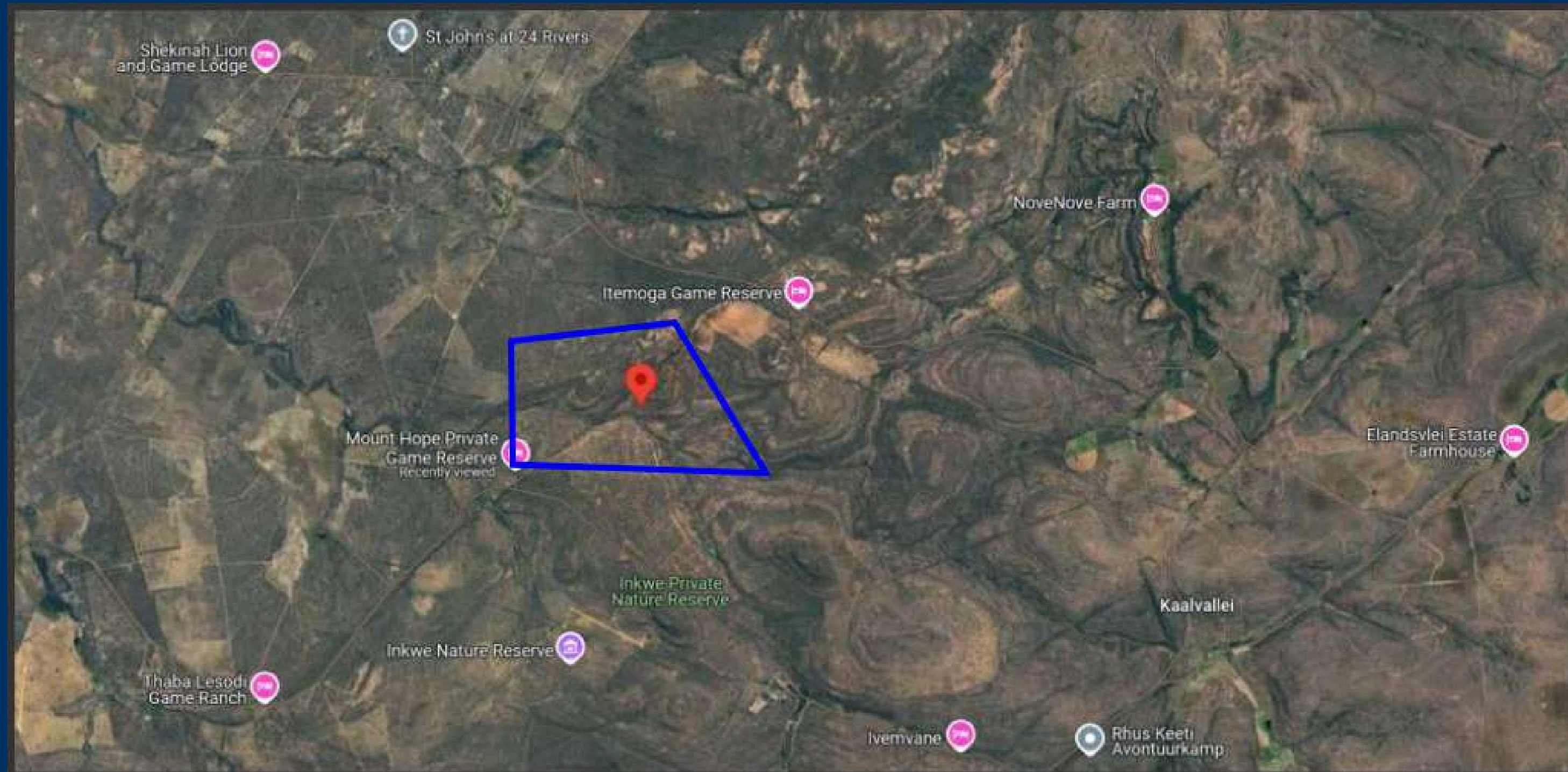


www.landhuse.co.za



LOCALITY

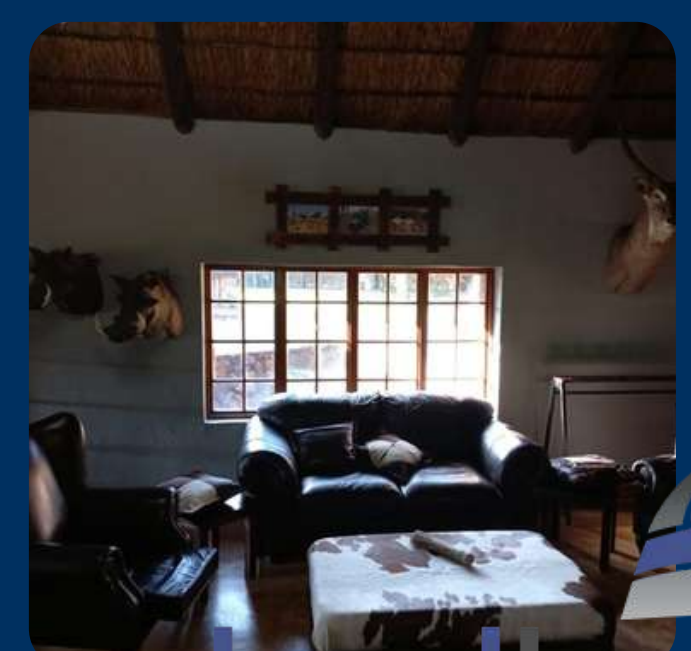
-24.307418, 28.304359



MOUNT HOPE PRIVATE GAME RESERVE
RE of Portion 0 of the Farm 157 "KLIPFONTEIN" KR

Title Deed Discription

Title Deed Number	T57693/2007PTA
Registered Land size	1 127 ha
Registered Discription	RE of Portion 0 of the Farm 157 "KLIPFONTEIN" KR
Registered Owner	MOUNT HOPE PRIVATE GAME RESERVE PTY LTD
Municipality	Mpumalanga



Description



LODGE AND ENTERTAINMENT AREA

- All rooms in the lodge area are fully furnish with on suite bathrooms
The lodge have the following fully fitted rooms, sleeping 22 people

Room 1 (sleeps 4)

- One bedroom with double bed and two quarter size beds;
- Large on suite bathroom with toilet, wash basin, bath and shower;

Room 2 (sleeps 4)

- Two bedrooms, one room with double bed and one room with two quarter size beds;
- Large bathroom with toilet, wash basin, bath and shower.

Room 3 (sleeps 2)

- One room with double bed;
- Bathroom with toilet, wash basin and bath, no shower.

Room 4 (sleeps 2)

- One room with two quarter size beds;
- Bathroom with toilet, wash basin and shower, no bath.

Room 5 (sleeps 4)

- Double storage room with one room at bottom and one room at the top;
- Bottom room have two quarter size beds in;
- Top room have two quarter size beds in but can sleep 4 beds if necessary;
- Bathroom on ground level with toilet, shower, wash basin and bath;
- Have one patio in front of room.

Room 6 (sleeps 4)

- Double storage room with one room at bottom and one room at the top;
- Bottom room have two quarter size beds in;
- Top room have two quarter size beds in but can sleep 4 beds if necessary;
- Bathroom on ground level with toilet, shower, wash basin and bath;
- Have one patio in front of room; Fridge.

Room 7 "PH Quarters" (sleeps 2)

- One room with two quarter size beds;
- Relative small room;
- Small bathroom with toilet, wash basin and shower.

Description

FULLY FITTED CONFERENCE ROOM/FACILITY

10 chair conference board room table excluding the sound system.

FULLY FITTED OFFICE

1 x L Shape Desk plus large gun safe.
Several Cabinets excluding yellow wood large cabinet
2 x loose standing filing cabinets.
1 x base station for two ways Radio System.
8 x hand hold two-way radios.
2 x fitted base station for two-way radios.
1 x two-way radio tower.

THE ENTERTAINMENT AREAS ARE INCLUSIVE OF THE FOLLOWING

Lounge area:

Several leather couches and tables, Gun holding rack;

Bar Area with fully fitted bar inclusive of:

Bar fridge
Ice Machine
Several glasses and bar accessories

Dining area

Several tables and chairs serving 28 people;
3 x antique wall standing cabinets;
2 x tables for food serving;
2 x Anvil Bain marries Three Division;
Trophies x 8.

Lapa and fireplace area

-1 x table and chair, 1 x lounge chair set, 2 x loose chairs, 8 x fireplace chairs, 2 x steel tables, 1 x gas braaiers linked to centralised gas bottle storing area
-Several Braai accessories.

Kitchen and food preparing area

-Fully fitted kitchen with utensils and storing area;
-Following equipment inclusive;
2 x burner gas stoves with splash backs, 3 deck bread oven(3 phase),
1 x large defy box freezer, 1 x fridge freezer combinations, 1 x Anvil Bain Marie Three Division;
-Fully operational kitchen able to serve 50 people at any time;
-Solid wood kitchen cupboards with marble tops;
-Lockup pantry;
-Fully fitted with centralised gas systems(gas ovens);
-Large washing and cleaning and preparation areas.

Two toilets for ladies and gents inside area.

Koi dam fully inclusive of the following:

-Koi' fish to an estimate value of R100 000, 2 x koi pond pumps, 2 x UV filters, 2 x Bio filters, nearly 80 Koi in Koi pond.

Bore hole with system to support lodge;

Swimming Pool;

-Swimming Pool pump;

Additional Bore Hole on Farm for backup and water open farm.



Description



HOUSES FOR SELF-CATERING & ACCOMMODATION

House Dwelling Number 1

- The house is built about 500 meters from the loge and is a fully fitted self-catering home
- The house includes the following features sleeping five people:
- Large Main bedroom with double bed and two single beds with on suite bathroom;

NOT FURNISHED

- On suite bathroom has shower, bath, wash basin and large bath;
- Bedroom 2 with two x quarter sleeping beds sharing bathroom;
- Bedroom 3 with two x quarter sleeping beds sharing bathroom;
- Large guest bathroom with toilet, shower, wash basin and bath;
- Open lounge, dining and kitchen area;
- Kitchen fitted with solid wood cupboards;
- Large open stoep area;
- Double garage which can be converted into another double room if required.

House Dwelling Number 2

- The house is built about 500 meters from the loge and is a not fitted with any furniture but cater for self-catering home.
- The house includes the following features sleeping five people and rooms can accommodate the same furniture as House dwelling one and includes:
- Large Main bedroom can fit the room with double bed and two single beds with on suite bathroom;

NOT FURNISHED

- On suite bathroom has shower, bath, wash basin and large bath;
- Bedroom 2 can fit with two x quarter sleeping beds sharing bathroom;
- Bedroom 3 can fit with two x quarter sleeping beds sharing bathroom;
- Large guest bathroom with toilet, shower, wash basin and bath;
- Open lounge, dining and kitchen area;
- Kitchen fitted with solid wood cupboards;
- Large open stoep area;
- Double garage which can be converted into another double room if required.



Description



House Dwelling Number 3

- The house is built about 500 meters from the lodge and is ideal suited for a couple
- The house has the following features:
 - One bedroom;
 - Separate shower and toilet;
 - Separate bath room;
 - Fully fitted kitchen with built in cupboards;
 - Lounge/kitchen open plan area;
 - Small stoep area.

House Dwelling Number 4

- The house is built about 700 meters from the lodge.
- The house has the following features:
 - Fully thatch roof;
 - Four bedrooms with, two bedrooms sharing one bathroom;
 - House can easily sleep 8 people;
 - Very luxury inside;
 - Big open plan kitchen, lounge and dining area;
 - Large veranda overlooking the Dwarsriver;
 - Beautiful garden;
 - House fully furnished;
 - Large outside braai area close to the river.



Staff Quarters

The staff quarters as the following features:

- 8 x rooms 4 x 4 meters;
- 1 kitchen and wash area 4 x 4 meters;
- 3 smaller staff rooms;
- Total staff rooms are 11 sleeping 22 people if required;
- Separate ladies bathroom with toilet and two showers;
- Separate men's bathroom with toilet and two showers.

Washroom and laundry

This is a fully fitted laundry inclusive of:

- 1 x Speed Queen Tumble dryer;
- 1 x Speed Queen Washing machine.
- Several Cabinets.
- Taxidermy and store room area
- Taxidermy preparation area;
- 6 x horse stables;
- 1 x horse stables preparation and store room;
- 6 x lockup 16m² storerooms;
- 2 x open side steel storerooms/sheds;
- Fully fitted 100 meter shooting range



Description



BUTCHERY AND CANOPY

Canopy

The canopy can park five to six cars easily.
This is a fully fitted butchery for the meat processing enthusiast

Butchery includes the following:

- 1 x Large meat freezer room with ability to cool to 5%;
- 1 x Large(3.2 x 4 x 2.4) meat freezer room with ability to cool meat to -15% ;
- 1 x Fire Extinguisher Holing to wash down meat;
- 1 x 3 ton Chain Block with lift;
- 1 x 5 Ton Chain Block with lift;
- 4 x Butchery Handsaw American;
- 8 x Butchery knives;
- 2 x Meat band saw machines (380Volt);
- 1 x Heavy Duty Auto Sausage Filler;
- 2 x Industrial Vacuum Packer machines;
- 1 x Biro Tenderizer Model Pro;
- 1 x Biltong Slicer 0.75kw Crown;
- 1 x 30 kg portion scale;
- 1 x 300kg carcass scale;
- 1 x No 52 Atlas Mincer;
- 1 x Patty Machine Crown 100mm;
- 1 x Stainless steel processing tables;
- 1 x Biltong Room.

VEHICLES, QUAD BIKES, EQUIPMENT AND FARMING EQUIPMENT

Vehicles

The vehicles are maintained in a very good condition and all vehicles are fully operations. The following vehicles are included:

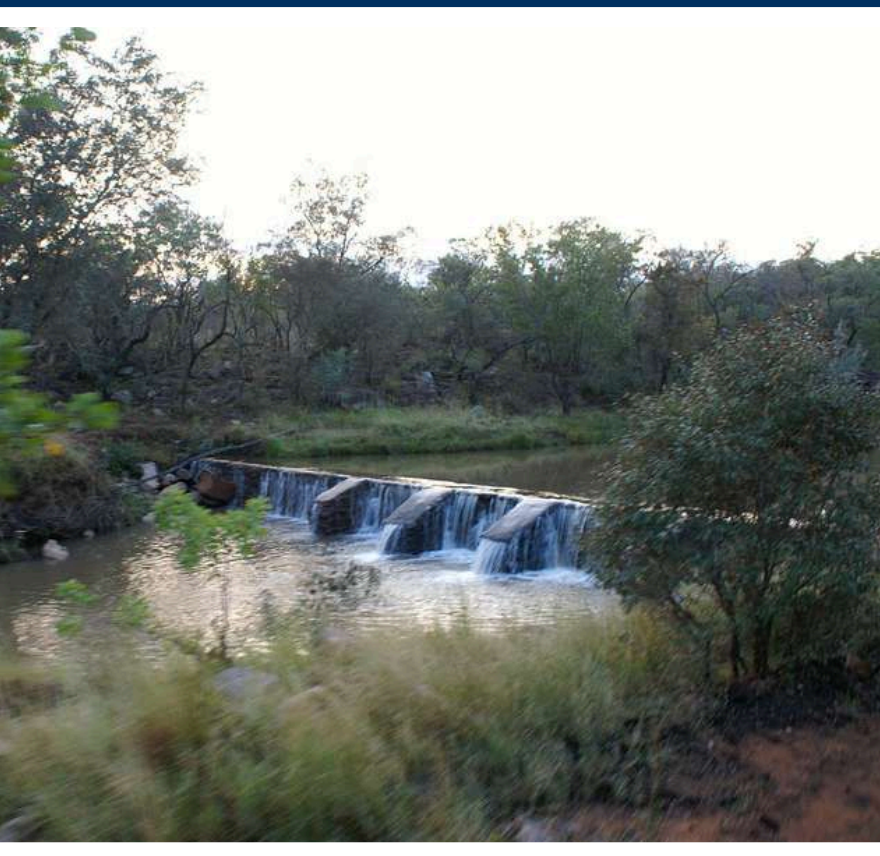
- 1 x Landrover GameViewer, close top;
- 1 x Grey Isuzu hunting Bakkie;
- 1 x ToyotaV8 (Lexus engine) rebuild Hunting Bakkie;
- 1 x Cream Landrover HuntingVehicle fully fitted for hunting;
- 1 x Toyota Cruiser withV8 Chevy engine fully fitted for hunting.
- 1 x Cream 4x4 Cruiser GameViewer

Quad Bikes(ALL QUAD BIKES NEED SOME WORK)

The following quad bikes are included:

- 2 x Suzuki 250 LTZ Quad Bikes;
- 2 xYamaha BlasterYFS 200;

Description



Tractor and Trailers and farming equipment

The tractors are maintained in a very good condition and all tractors are fully operations. The following tractors are included:

- 1 x Ford Tractor 4 x 4;
- 1 x Large heavy Duty Farm Trailer;
- 1 x small trailer;
- 1 x Yellow 4 wheel scraper;
- 1 x 3 point scraper;
- 8 x Oom Gielie Dipbakke;
- 1 x Lister Engine and pump for pumping water from river into irrigation dams;
- 1 x Diesel generator;
- Several garden equipment and lawnmowers;
- 4 x pressure pumps
- 1 x TRF70 1.5 HP 220V Hammer mill

RARE GAME BREEDING CAMPS AND HUNTING FARM

The farm is uniquely developed with 5 rare game breeding camps and 450 hectare open hunting farm

The rare breeding camps are of a very high quality with 2.3 meter high line fencing, 1.5meter high varkdraad and 8 stains of electric fencing. Camps details are as follow:

Camp 1

- 20 hectare fully fenced camp
- 2 x watering holes & 2 x thatch covered feeding points;
- 2 x Oom Gielie feeding troughs;
- 2 x entrance gates.

Camp 2

- 25 hectare fully fenced camp
- 2 x watering holes & 1 x thatch covered feeding points;
- 2 x Oom Gielie feeding troughs;
- 5 x entrance gates.

Camp 3

- 25 hectare fully fenced camp
- 2 x watering holes & 1 x thatch covered feeding points;
- 2 x Oom Gielie feeding troughs;
- 3 x entrance gates

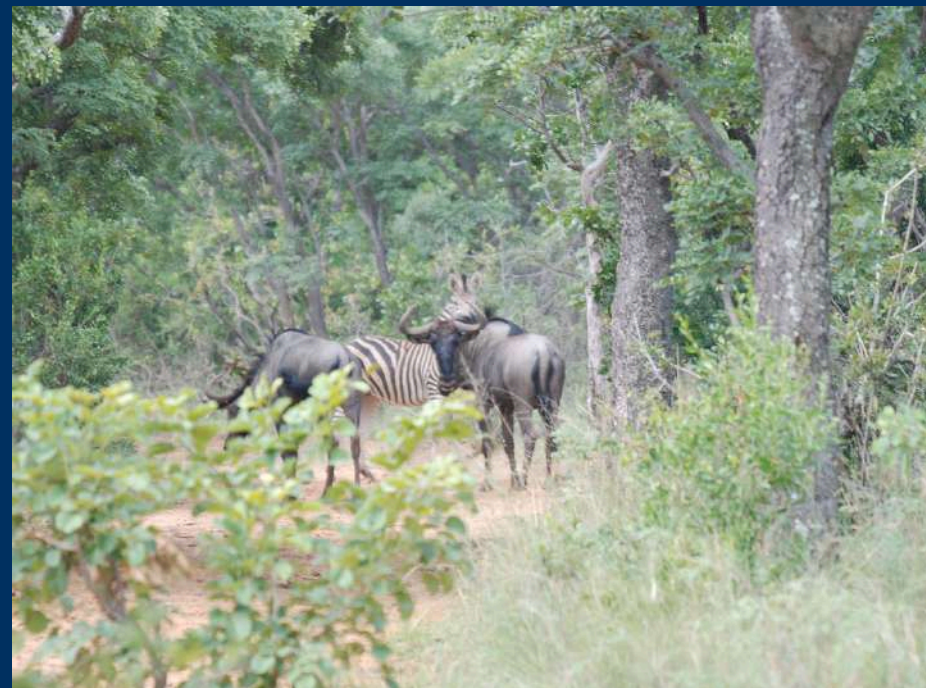
Camp 4

- 20 hectare fully fenced camp
- 2 x watering holes & 2 x thatch covered feeding points;
- 2 x Oom Gielie feeding troughs;
- 4 x entrance gates

Camp 5

- 65 hectare fully fenced camp
- 2 x watering holes & 2 x thatch covered feeding points;
- 2 x Oom Gielie feeding troughs;
- 3 x entrance gates

Game



Open Farm

6 x Golden Wildebeest Bulls OF 20 x Golden Wildebeest Cows OF 65
x Blue Wildebeest, 20 x Eland, 15 x Nyala, 125 x Impala, 15 x Zebra, 30
x Kudu, 10 x Giraffe
12 x Waterbuck, 10 x Bushbuck, 20 x Duiker, 10 x Bushpig, 30 x
Warthog, 8 x Klipspringer

In Camps

4 x Black Impala OF 12 x Black Impala Ewes
1 x White Flank Impala Ram, 9 x White Flank Impala (young), 8 x Fallow Deer
10 x White Flank Impala Splits, 6 x Springbuck, 2 x Steenbuck

Game

SUMMARY OF GAME ON FARM AS OFF 28 FEBRUARY 2026

Game Quantities Reconciliation as at 28 February 2026

Description	Quantity
Blouwildebees	60
Eland	20
Njala	20
Rooibokke	120
Zebra	10
Koedoe	30
Kameelperde	10
Waterbokke	10
Duikers	20
Bushbuck	10
Bushpig	10
Warthog	30
Klipspringers	8
TOTAL OPEN FARM GAME	358

GAME IN CAMPS

Description	Quantity
Golden wildebeest Bull of	9
Golden wildebeest Females of	20
Black Imapla of	6
Black Impala Breeding Ram	1
Black Impala Ewes : Camps	12
White Flank Impala Ram : Camps	0
White Flank Impala Young : Camps	20
Fellow Deer : Camps	4
Impala White Flanks Splits : Camps	11
Sringbuck : Camps	6
Steenbuck : Camps	2
TOTAL GAME IN CAMPS	92
TOTAL GAME ON FARM	450

Photography



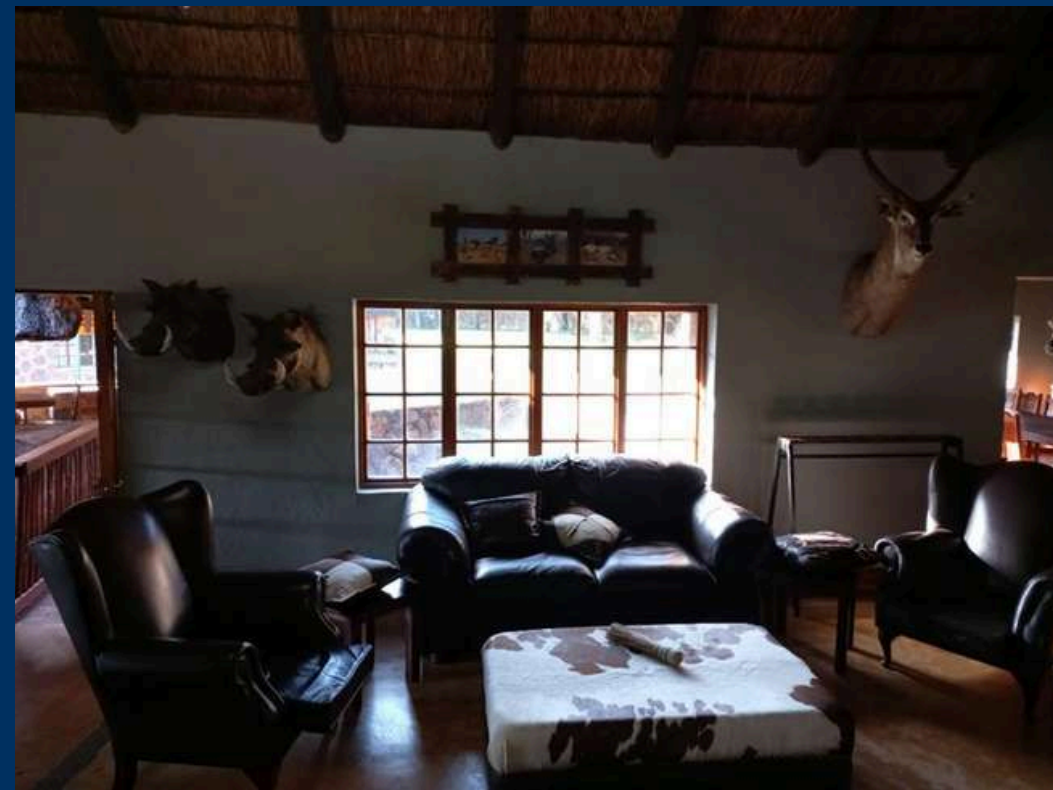
Photography



Photography



Photography



Photography



Thank You!

Contact Us



012 364 2563



info@landhouse.co.za



www.landhouse.co.za



111 Ringduif Street, Roodeplaat, 0030



landhouse
properties