

# Portion 2 & 3 of WOLVEFONTEIN FARM 645, LQ, Vaalwater, Lephhalale


1 127 Ha on the Mokolo Dam

On Auction

**21 May 2026**  
11h00

On Site & Online

 Martin van Zyl - 082 610 1199 - [martin@landhouse.co.za](mailto:martin@landhouse.co.za)

 Werner Vos - 073 815 1335 - [wernervos@igen.co.za](mailto:wernervos@igen.co.za)

  
landhouse  
properties

# GENERAL

## Our Mission

- Our bespoke marketing is tailored for any client's needs, ensuring maximum exposure and a successful relationship with our clients.

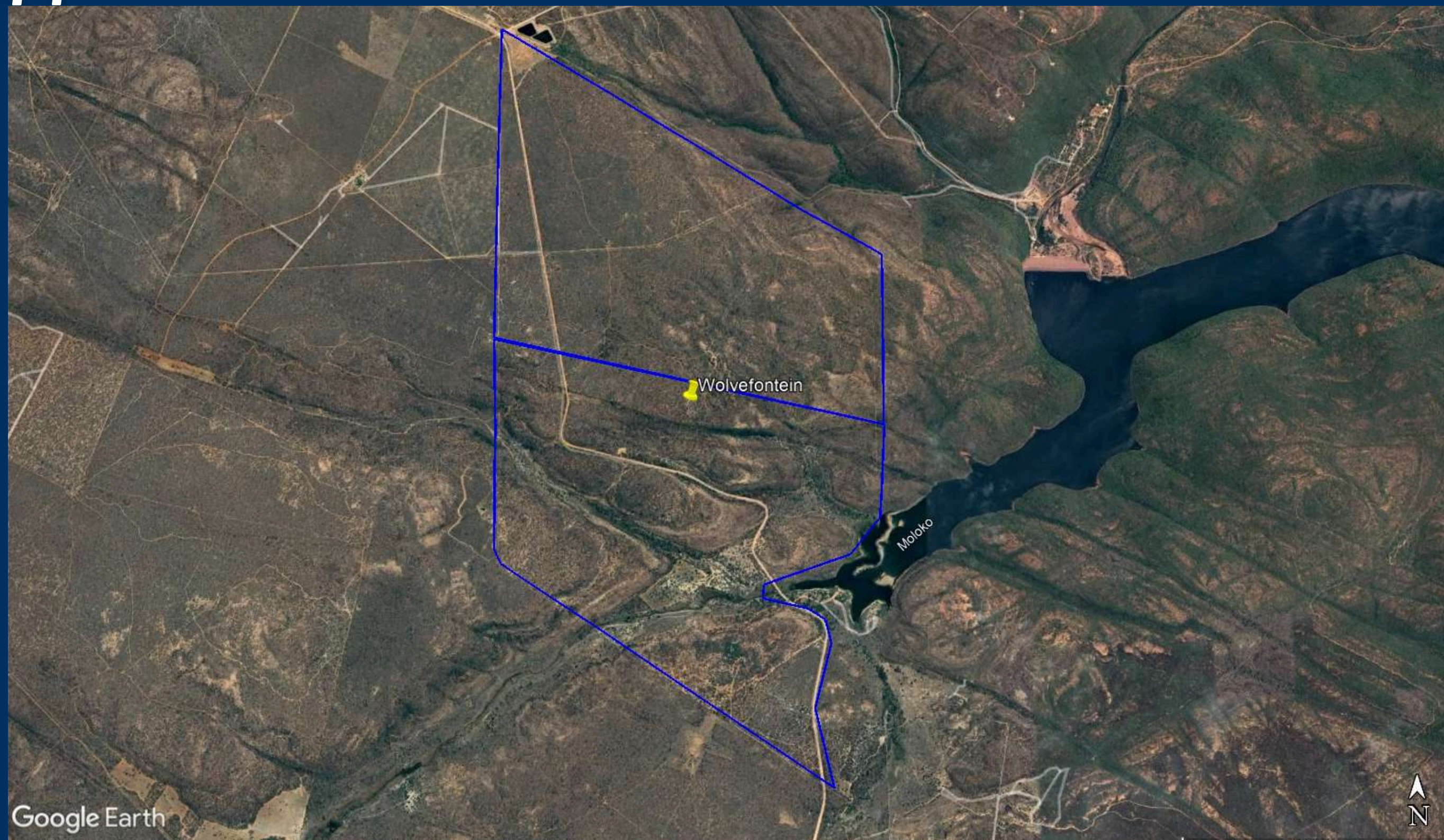
## Our Vision

- To be the leading auction and sales platform in the agricultural sector.

## Terms and Conditions

- **Deposit** - 5% Payable on the day of the auction.
- **Commission** - 6% (plus VAT) payable on the day of the auction over and above bid price.
- **Guarantees** - 45 (Forty Five) days from date of acceptance.
- **Confirmation** - 7 (seven) days (Owner can confirm on the day of the auction)
- **VAT / Transfer Duty** - VAT
- **Bidding Registration Fee** - R10 000.00 (Refundable if unsuccessful)

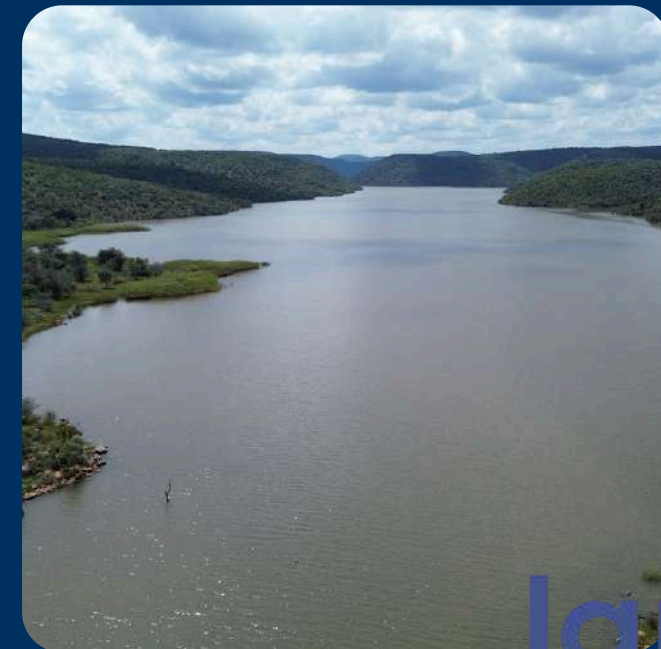
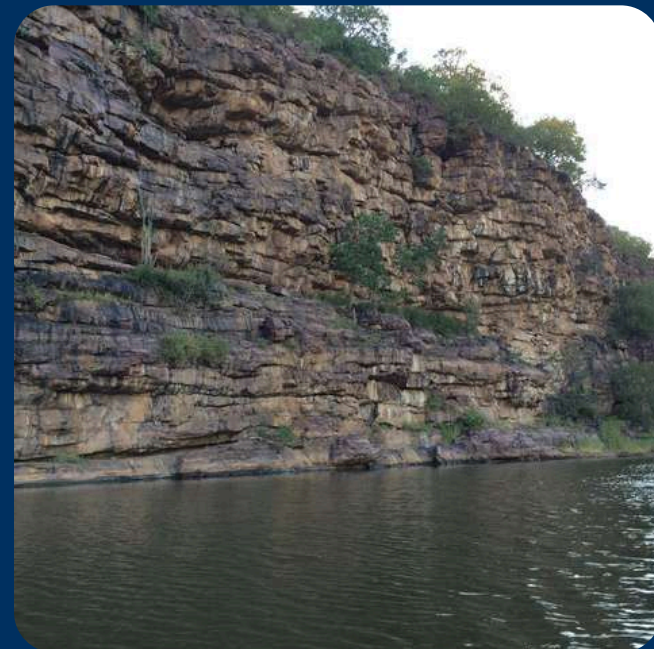
# LOCALITY



**Portion 2 & 3 of WOLVEFONTEIN FARM 645, LQ,  
Vaalwater, Lephale**

# Title Deed Description

Title Deed Number	T54646/1987PTA
Registered Land size	1 127 ha
Registered Discription	Portion 2 & 3 of WOLVEFONTEIN FARM 645, LQ,
Municipality	Lephalale



# Description



## The Main Lodge:

- 7 Bedroom (all en-suite)
- Open-plan Kitchen, Lounge and Dining Area with central fireplace
- Circular Patio with view over the Makolo Dam
- Swimming Pool
- Loft
- Manicured Garden



## Hunters and Anglers Accommodation

- 2 Chalets
- Swimming pool and boma
- Easy access to the dam

## Camps

- 5 Electrified Camps ranging from 4 Ha to 80 Ha
- 1 Non-electrified camp of 250 Ha
- 2 smaller holding camps non-electrified of 3 and 4 Ha respectively



## Agri Infrastructure

- Game Fenced
- 4 Boreholes (1 with Solar)
- Slaughtering Facilities with Cold Room
- Old Farmhouse
- Inverter with Batteries in place
- Good quality Worker's Accommodation

# Description



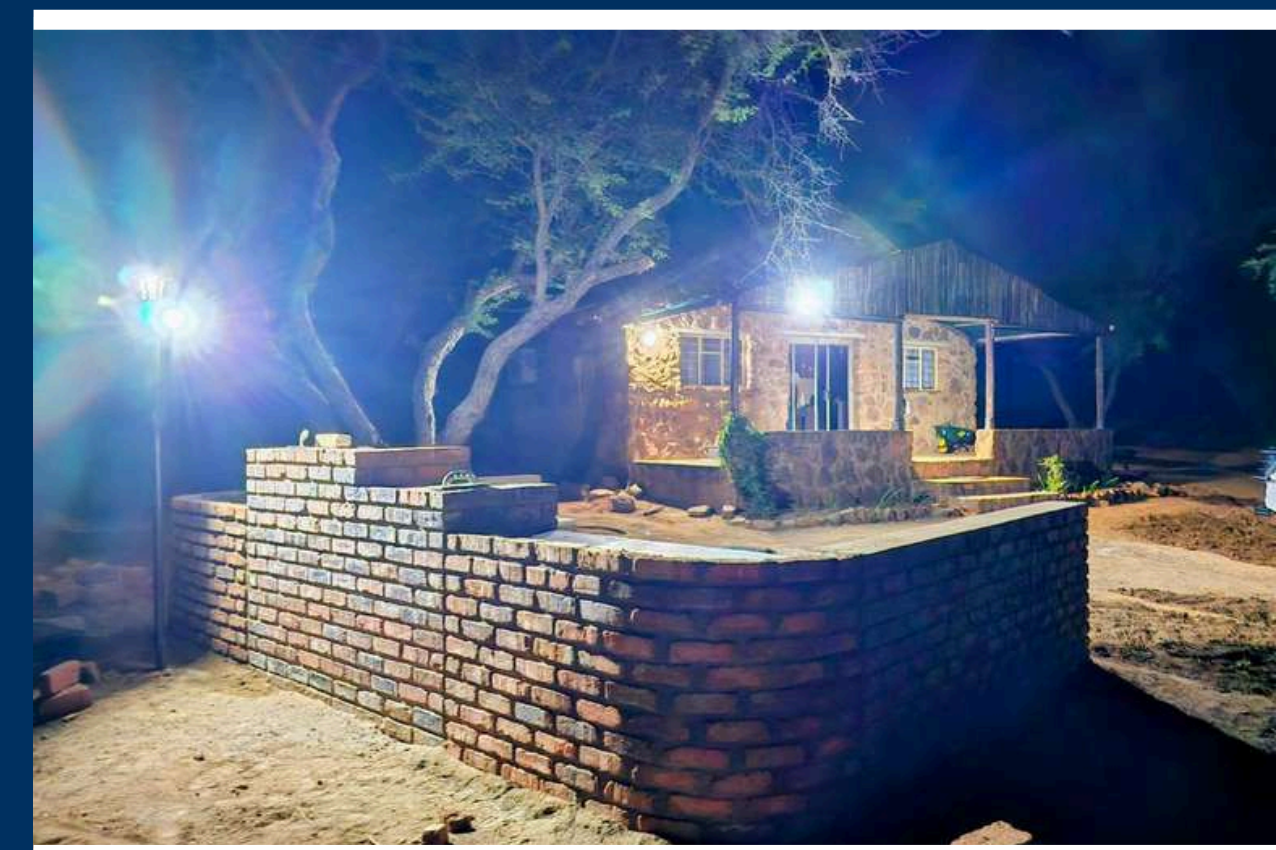
## Chalets

- Newly renovated kitchens
- Newly built bomas
- 5 beds per Chalet
- Air-conditioning in living rooms
- Roof fans in rooms
- Swimming pool



## Slaughter house

- Cold room
- Room to store skins and trophy's
- Generator for lodge, chalets and Slaughter house.



## Old Farm house

- Not restored
- Large house plenty potential for a big hunting/fishing Chalet.

## Vehicles and farm equipment

- 1 Single Cab Hilux with hunting rails
- 1 Mahindra Double Cab
- 1 ford 6000 tractor
- All trailers and wagon
- Ripper
- Disc
- Grass cutter for tractor

# Game



## Water

- 6 watering holes
- 5 of them with blindes
- True perenial fountains

Water in gravity fed from reservoir to all watering holes.

The one Watering hole in the camp under the lodge is filled by the same borehole as the lodge.

Lodge and Chalets Water supply is stored in 3 large JoJo tanks, also supplying the irrigation to garden.

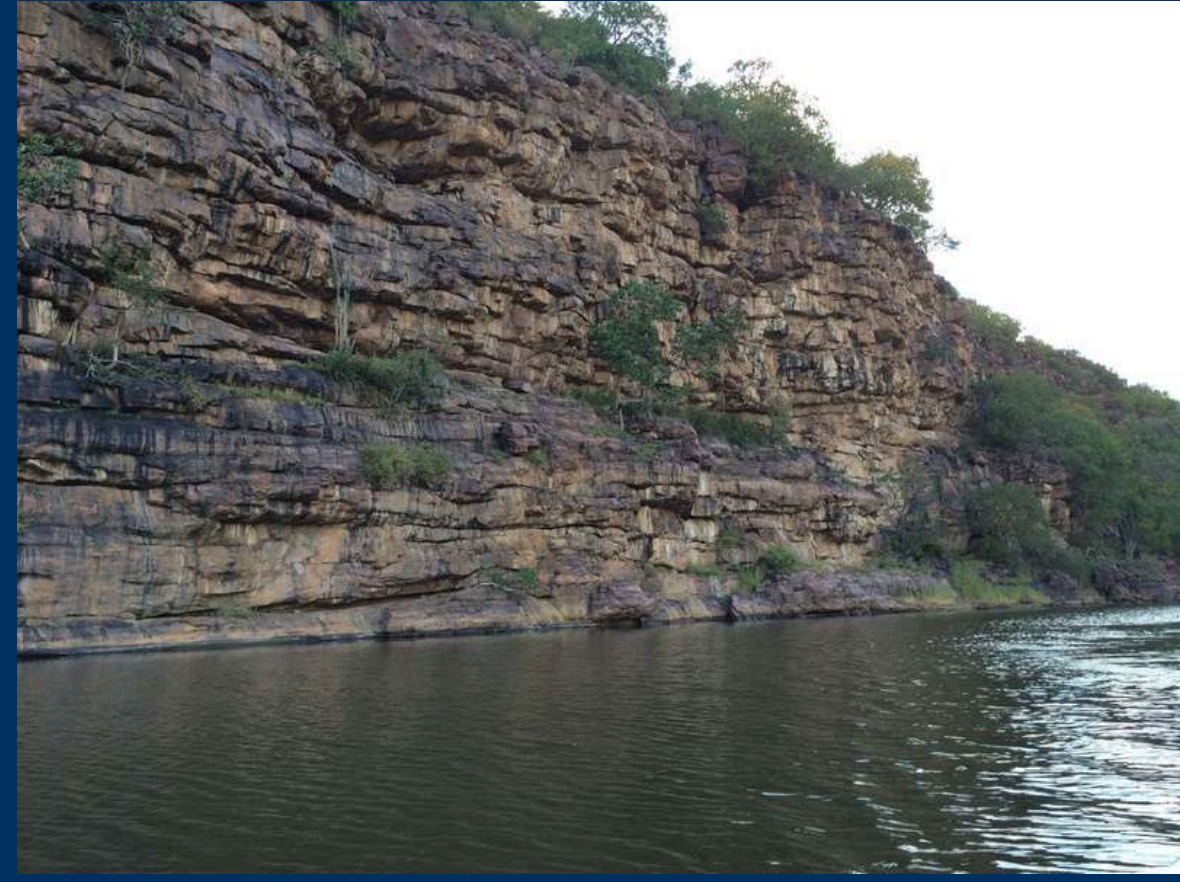
## Game in Camp under Lodge

- Livingstone Eland
- Saddle back Impala
- White flanked Impala
- Giraffe
- Bushbuck
- Nyala

## Game on Farm

- Golden Gnu Wildebeest
- Blue Wildebeest
- Waterbuck
- Nyala
- Kudu
- Impala
- Sable
- Zebra
- Bushbuck
- Klipspringer
- Bushpig
- Steenbuck
- Common Duiker
- Grey Reedbuck
- Warthog

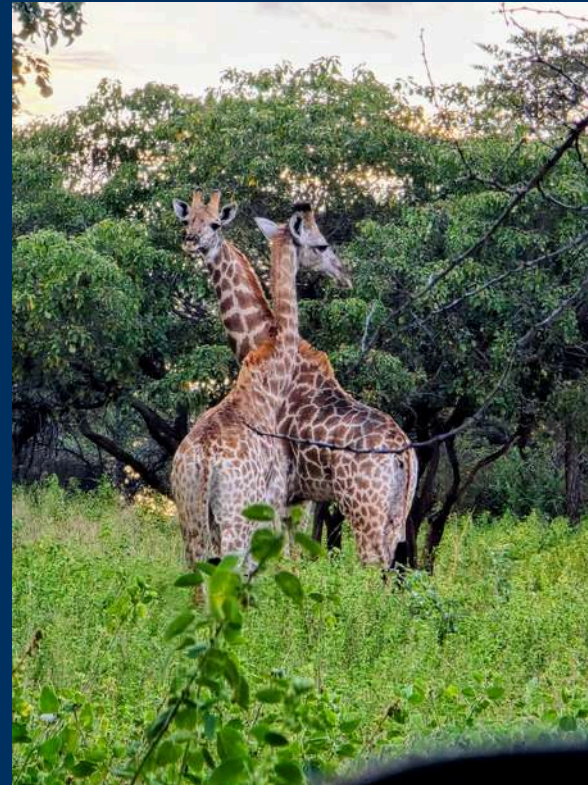
# Photography



# Photography





# Photography



# Thank You!

## Contact Us

-  012 364 2563
-  [info@landhouse.co.za](mailto:info@landhouse.co.za)
-  [www.landhouse.co.za](http://www.landhouse.co.za)
-  111 Ringduif Street, Roodeplaat, 0030

