

# Portion 3 of the Farm 476 - Droogesloot "KR"

## Bela-Bela, Limpopo

### Farm Size: 549.74 Ha

## ON AUCTION

## 17 & 18 June

## Online



 [www.landhouse.co.za](http://www.landhouse.co.za)



 Martin van Zyl - 082 610 1199 - [martin@landhouse.co.za](mailto:martin@landhouse.co.za)

 Rinette Louw - 082 825 8472 - [rinette@landhouse.co.za](mailto:rinette@landhouse.co.za)



landhouse  
properties

# General

## Our Mission

- Our bespoke marketing is tailored for any client's needs, ensuring maximum exposure and a successful relationship with our clients.

## Our Vission

- To be the leading auction and sales platform in the agricultural sector.



# Locality

-24.894636,28.012511



**Portion 3 of the Farm 476 - Droogesloot "KR"**  
**Bela-Bela, Limpopo**

# Title Deed Discription

Title Deed Number

T10150/913

Registered Land size

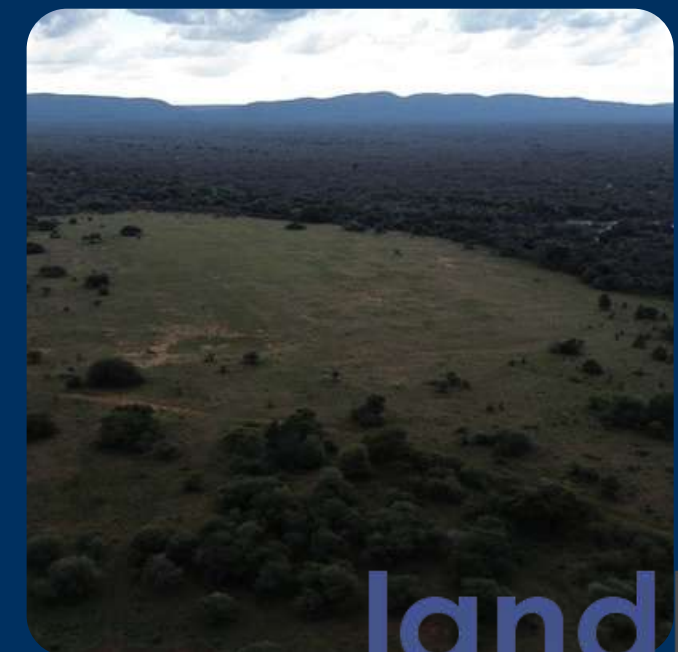
549.74 Ha

Registered Discription

Portion 3 of the Farm 476  
- Droogesloot "KR" Bela-  
Bela, Limpopo

Municipality

Bela-Bela, Limpopo



landhouse  
properties

# Description



## Property Improvements & Features

### Main Residence

- Spacious 4 Bedroom Main House
- 2 Bathrooms
- Approx. 300 m<sup>2</sup> under roof
- Swimming Pool

## Additional Infrastructure

### Worker's Accommodation consisting of:

- 2 Rooms
- Kitchen
- Bathroom
- 720 m<sup>2</sup> Feed Shed
- 240 m<sup>2</sup> Enclosed Shed

## Fencing

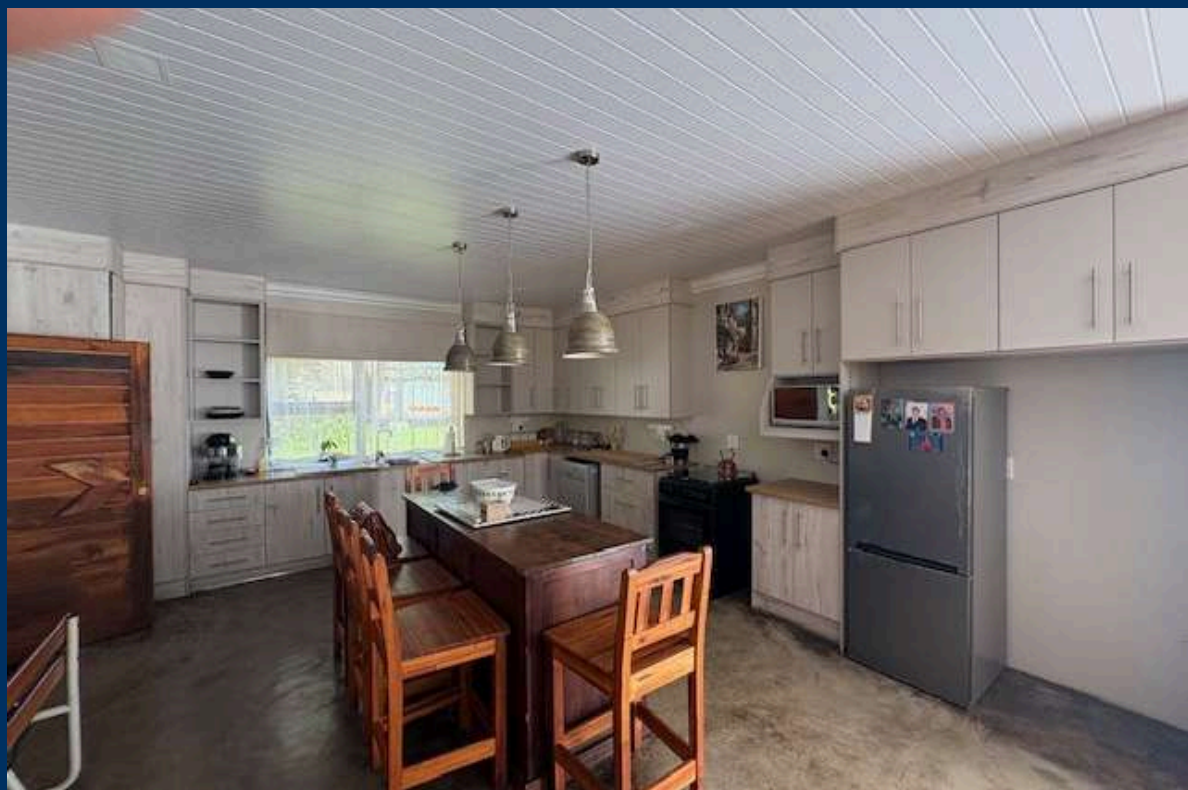
### • Fully Game Fenced **Game Included**

- 5 Giraffe
- 50 Impala
- 30 Wildebeest
- 40 Nyala
- 5 Blesbuck
- 40 Kudu

## Water Supply

- 4 Boreholes (2 Equipped)
- 6 Watering Holes with Bowhides
- Each fitted with a 2,500 litre tank
- 2 Large Dams

# Photography



# Photography






# Photography



# Thank You!

## Contact Us

-  012 364 2563
-  [info@landhouse.co.za](mailto:info@landhouse.co.za)
-  [www.landhouse.co.za](http://www.landhouse.co.za)
-  111 Ringduif Street, Roodeplaat, 0030

