

RE OF PORTION 2 OF FARM 35 "ZACHARIASBOOM" KR, LIMPOPO

FOR SALE



-  Rinette Louw - 082 8258472 - rinette@landhouse.co.za
-  Martin van Zyl - 082 610 1199 - martin@landhouse.co.za
-  info@landhouse.co.za

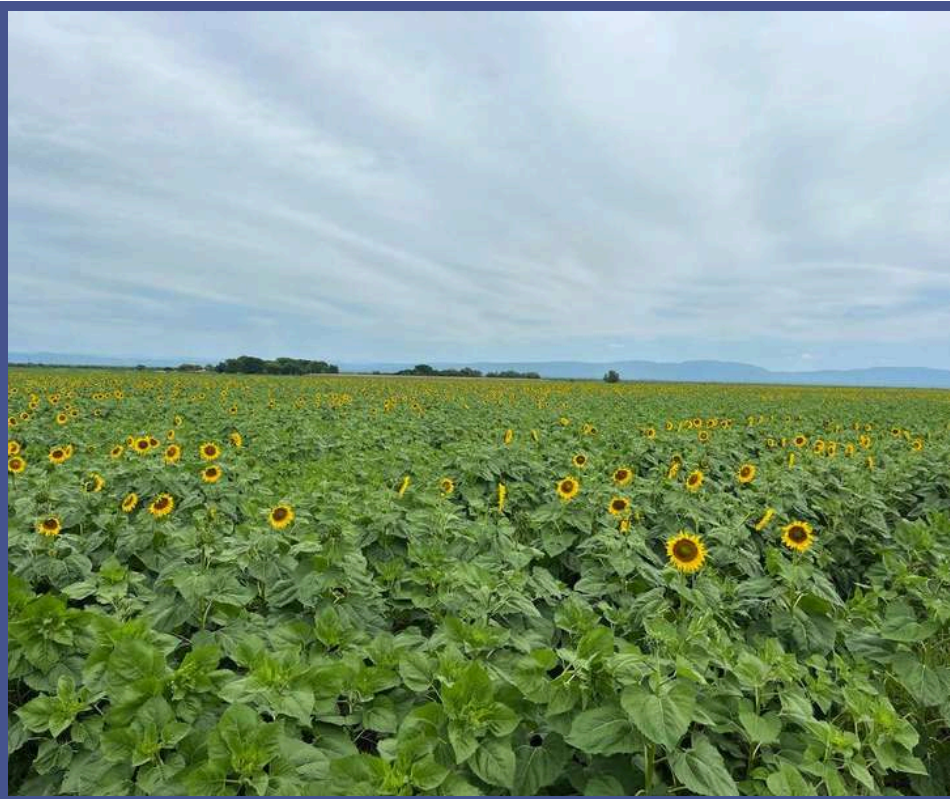


CONTENTS:

1. Disclaimer
2. Locality
3. Title Deed Information
4. Description and Improvements
5. Photography

SALE DISCLAIMER

Whilst all reasonable care has been taken to ensure the accuracy of the information provided, neither Landhouse Properties nor the Sellers warrant the accuracy or completeness of such information. Neither party shall be held liable for any direct or indirect loss or damage of whatsoever nature suffered by any person as a result of any errors, omissions, or inaccuracies in the information supplied, whether arising from negligence or otherwise.



LOCALITY



PROPERTY ADDRESS: ERF 354, Modimolle/Mookgophong Municipality

SUBURB AND CITY: Modimolle/ Mookgophong

LOCATION COÖRDINATES:

24°28'47.9"S 28°53'04.5"E

-24.479975, 28.884571



TITLE DEED INFORMATION

REGISTERED DESCRIPTION: RE of Ptn 2 Farm 354 "ZACHARIASBOOM"
Portion 2 Reg Div: "KR"

TITLE DEED NUMBER: T99503/2013PTA

SITE AREA: 256.5682 ha



DESCRIPTION

Land

- 257 Ha farm
- Sweet grazing veld
- High carrying capacity
- Nyl River grazing
- Approximately 92 Ha of turf fields
- Fully enclosed with game fencing

Camps

- 6 camps

Water Infrastructure

- 1 equipped borehole at the house
- 1 livestock drinking point supplied by a Lister pump
- Concrete reservoir/dam (not equipped with pumps)

Buildings & Infrastructure

Storage

- Large shed (20m x 12m)

Residential

- Old A-frame house (not habitable)

Staff Accommodation

- 2 labourers' houses

Utilities

- Eskom electricity connection
- Electricity currently disconnected