



landhouse
properties

MOKAIKAI

Private Nature Reserve

AN EXCLUSIVE BUSHVELD RETREAT IN THE HEART OF THE WATERBERG

Nestled within the prestigious Mokaikai Private Nature Reserve, part of the renowned Greater Mabula Game Reserve, this exceptional bushveld property offers a rare combination of luxury, privacy and untamed African wilderness. Surrounded by thousands of hectares of pristine conservation land and free-roaming wildlife, the property provides an unparalleled lifestyle opportunity within one of Limpopo's most sought-after wildlife destinations.

Designed for discerning owners seeking both comfort and exclusivity, the residence seamlessly blends sophisticated living with the natural beauty of the surrounding bushveld. Whether enjoyed as a private family retreat, an executive getaway or an upmarket hospitality venture, this remarkable property delivers an authentic safari experience without compromising on modern luxury.

From breathtaking game viewing opportunities to world-class entertainment spaces and luxurious guest accommodation, every aspect of the property has been carefully considered to create an extraordinary lifestyle investment in the heart of South Africa's iconic Waterberg region.

THE GREATER MABULA CONSERVANCY

Mokaikai Private Nature Reserve forms part of the approximately 10,000-hectare Greater Mabula Game Reserve, one of the most established and respected wildlife destinations in the Waterberg region of Limpopo.

The reserve enjoys open traversing agreements with neighbouring conservation areas, creating vast expanses of uninterrupted bushveld where wildlife roams freely across reserve boundaries. This unique conservation model offers residents and visitors exceptional game viewing opportunities while preserving the natural integrity of the ecosystem.

The reserve shares boundaries with several renowned wildlife destinations, including Mabalingwe Nature Reserve and the greater Mabula Game Reserve complex, both recognised for their abundant wildlife, scenic landscapes and premier safari experiences.

Situated within the UNESCO-recognised Waterberg Biosphere, the area is celebrated for its biodiversity, dramatic bushveld scenery and excellent year-round climate, making it one of South Africa's premier wildlife and lifestyle destinations.

CONTENTS:

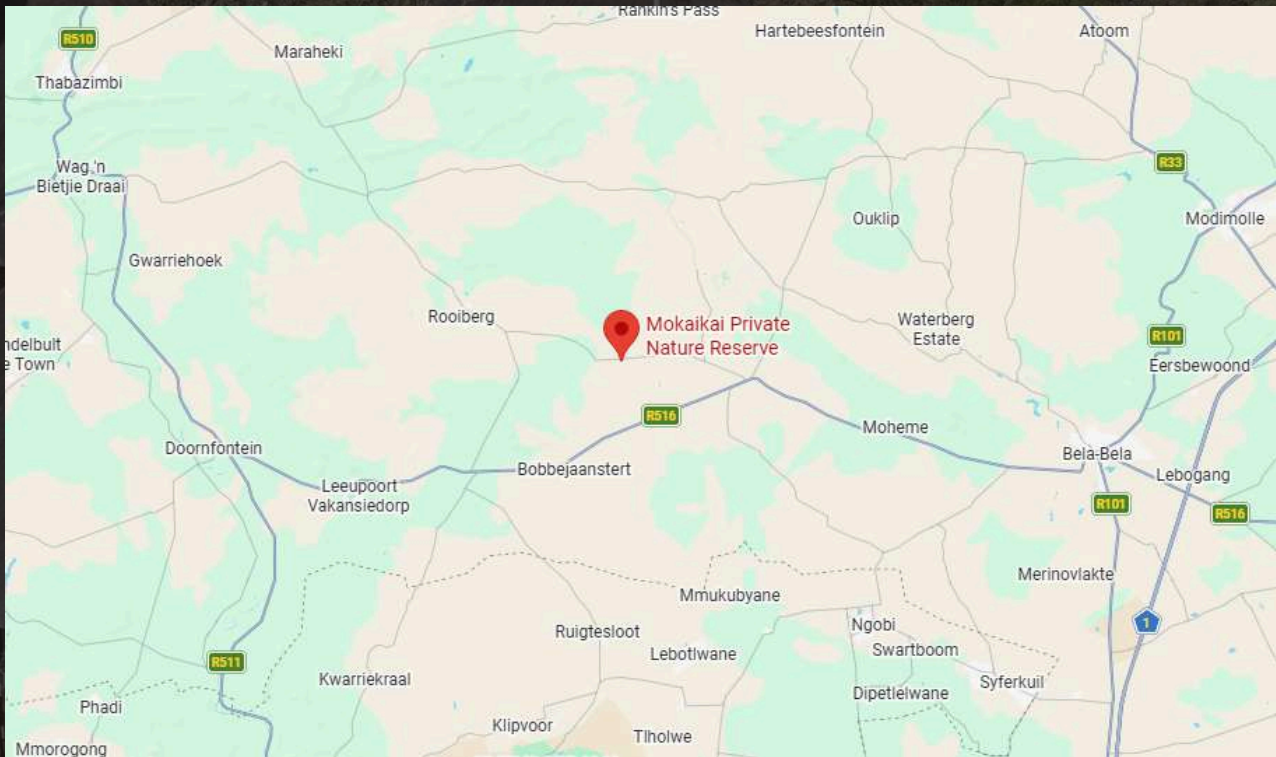
1. Disclaimer
2. Locality
3. Title Deed Information
4. Description and Improvements
5. Photography
6. Conclusion

SALE DISCLAIMER

Whilst all reasonable care has been taken to ensure the accuracy of the information provided, neither Landhouse Properties nor the Sellers warrant the accuracy or completeness of such information.

Neither party shall be held liable for any direct or indirect loss or damage of whatsoever nature suffered by any person as a result of any errors, omissions, or inaccuracies in the information supplied, whether arising from negligence or otherwise.

LOCALITY



PROPERTY ADDRESS: ERF 522, Bela-Bela Municipality
SUBURB AND CITY: Mokaikai Private Nature Reserve, Bela-Bela

LOCATION COÖRDINATES:

24°47'19.4"S

27°52'27.4"E

-24.788723, 27.874283

TITLE DEED INFORMATION

T100513/2001

SITE AREA: 1.0016 ha

Ptn 32 Farm 522 "HARTBEESTPOORT" Portion 32 Reg Div: "KQ" Province: "LIMPOPO"

DESCRIPTION AND IMPROVEMENTS

Accommodation

- Master Suite with En-Suite Bathroom
- Second Lounge (Convertible to Additional Bedroom)
- 3 Luxury Guest Suites with Bathrooms
- Open-Plan Lounge & Dining Area
- Kitchen

Entertainment & Outdoor Living

- Upstairs Entertainment Area
- Bar
- Braai Area
- Veranda with Reserve Views
- Swimming Pool

Staff & Utility Improvements

- Staff Cottage (Bedroom, Bathroom, Kitchen & Lounge)
- Storeroom

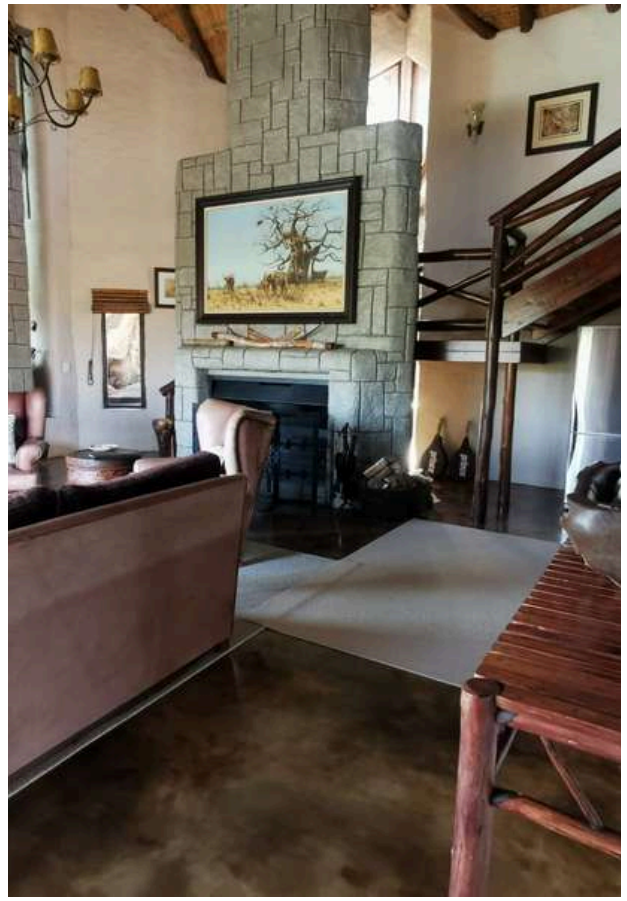
LUXURY PACKAGE INCLUDED IN THE SALE

The property is offered as a complete turnkey bushveld retreat, allowing the purchaser to immediately enjoy the lifestyle and amenities without additional capital expenditure.

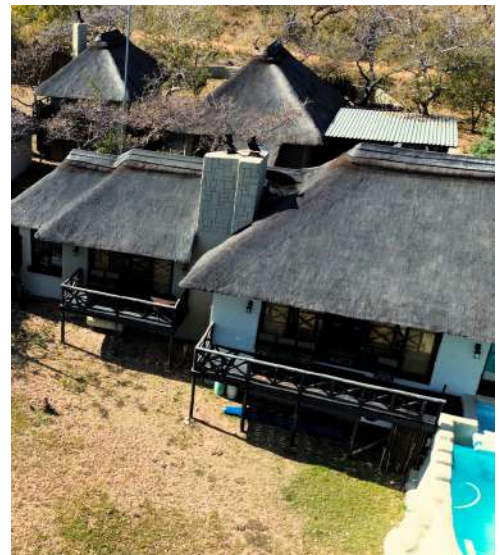
Included in the sale:

- Game Viewer Vehicle
- Furniture and Décor (where applicable)
- Appliances and Equipment
- Entertainment Area Furnishings
- Guest Suite Furnishings
- Operational Lodge Equipment (where applicable)
- Selected Moveable Assets

A detailed inventory of included assets will be made available to qualified purchasers upon request.







WHERE LUXURY MEETS THE WILD

Nestled within the heart of the Greater Mabula conservation area, this exceptional bushveld retreat offers a rare balance of comfort, privacy and natural beauty. Surrounded by unspoilt wilderness and abundant wildlife, it is a place where unforgettable memories are made and lasting legacies are created.

A unique opportunity to own a piece of Africa's most treasured landscape.



Martin van Zyl | 082 610 1199
martin@landhouse.co.za
www.landhouse.co.za